



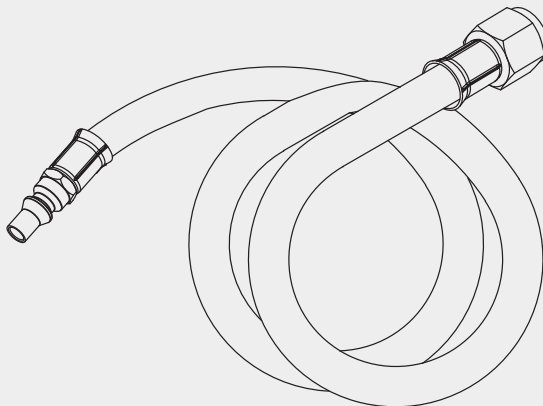
USER MANUAL

RV Gas Hose Kit

Model: TYT-ACC-RVC

CONTENTS

- 1 Safety Warnings
- 1 Package Contents
- 2 Installation
- 8 Checking for Gas Leaks
- 9 Specifications
- 9 Warranty



SAFETY WARNINGS

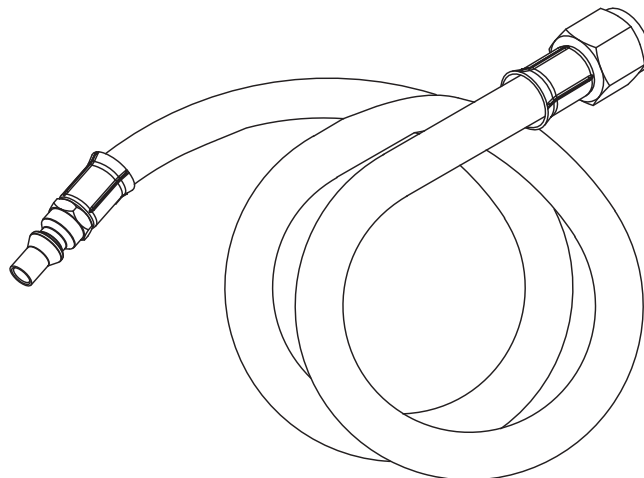
▲ WARNING: Failure to comply with these instructions may result in a fire or explosion that may cause serious bodily injury, death, or property damage.

BEFORE YOU USE YOUR APPLIANCE

1. Move the appliance to an open area. See owner's manual.
2. Make sure the tank valve is in its full **OFF** position.
3. Check tank valve features to ensure it has proper external mating thread or quick connector.
4. Make sure all burner valves are in their **OFF** positions.
5. Inspect valve connection port and regulator assembly. Look for any damage or debris. Remove any debris. Inspect the hose for damage. **NEVER** attempt to use damaged or plugged equipment. See your local LP gas dealer for repairs.
6. When connecting regulator assembly to the tank valve, hand tighten nut clockwise to a positive stop. **DO NOT** use a wrench to tighten. Use of a wrench may damage the quick closing coupling nut and result in a hazardous condition.
7. Open tank valve fully. Use a soapy water solution to check all connections for leaks before attempting to light the appliance. If a leak is found, turn the tank valve off and do not use the appliance until repairs can be made by a local LP gas dealer. **DO NOT** attempt to make repairs yourself.
8. **NEVER** attempt to use the appliance or any components that have been damaged or exposed to an accidental fire.

PACKAGE CONTENTS

10-foot liquid propane gas (LPG) hose
with 5/8-18 UNF to 1/4-18" NPT connectors



INSTALLATION



HOW TO INSTALL YOUR RV GAS HOSE

STEP 1

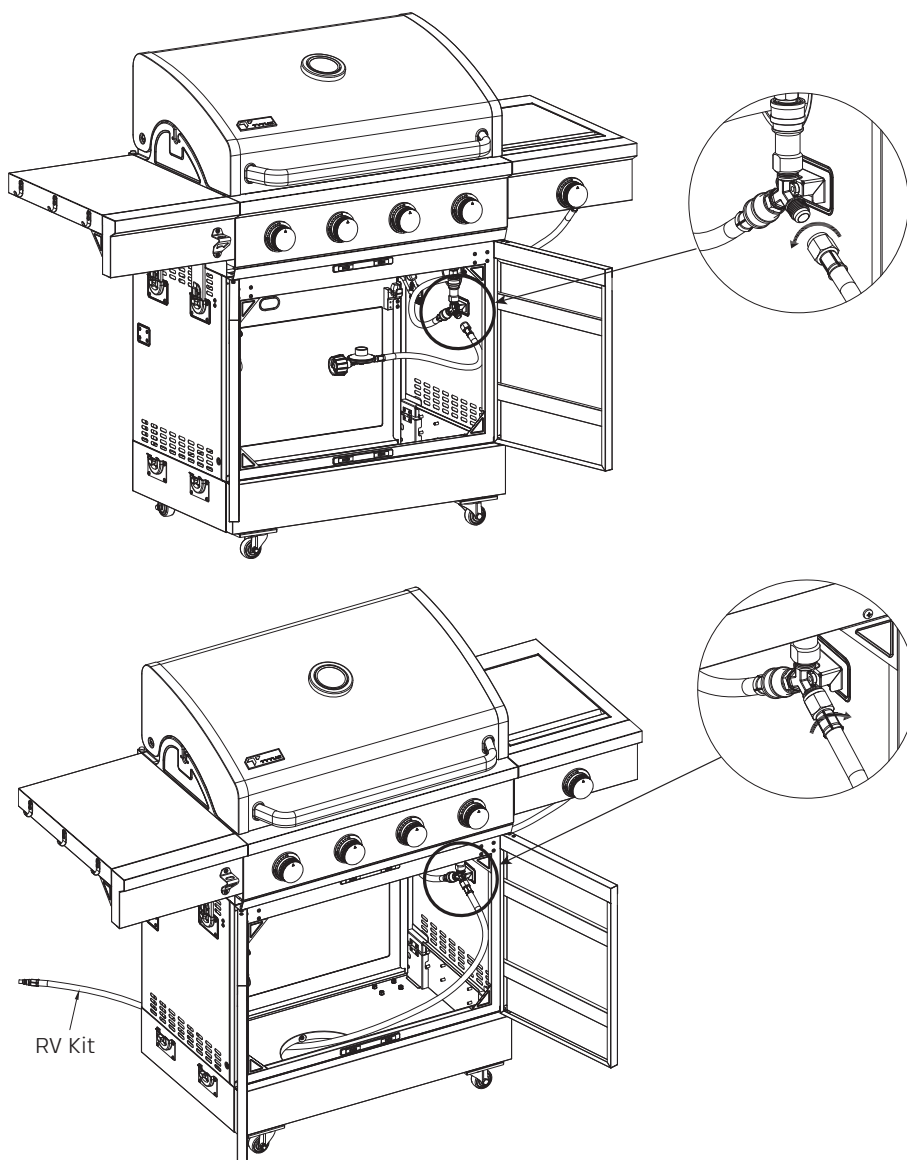
Remove the regulator hose from your gas-powered TYTUS unit.

STEP 2

Connect the threaded end of your RV gas hose to your TYTUS unit.

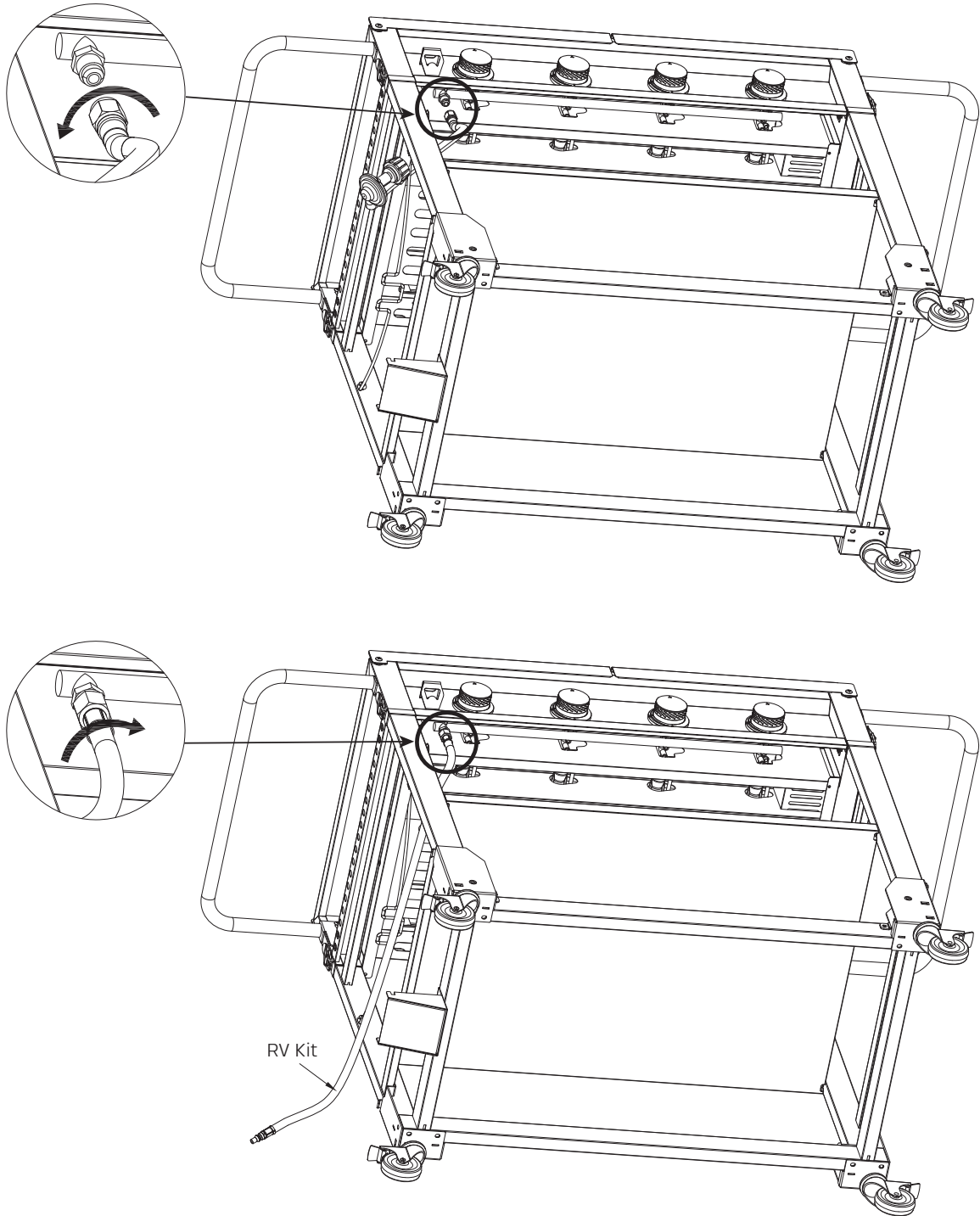
This product works for the following TYTUS Gas Grills:

Anaheim 4-Burner Gas Grill



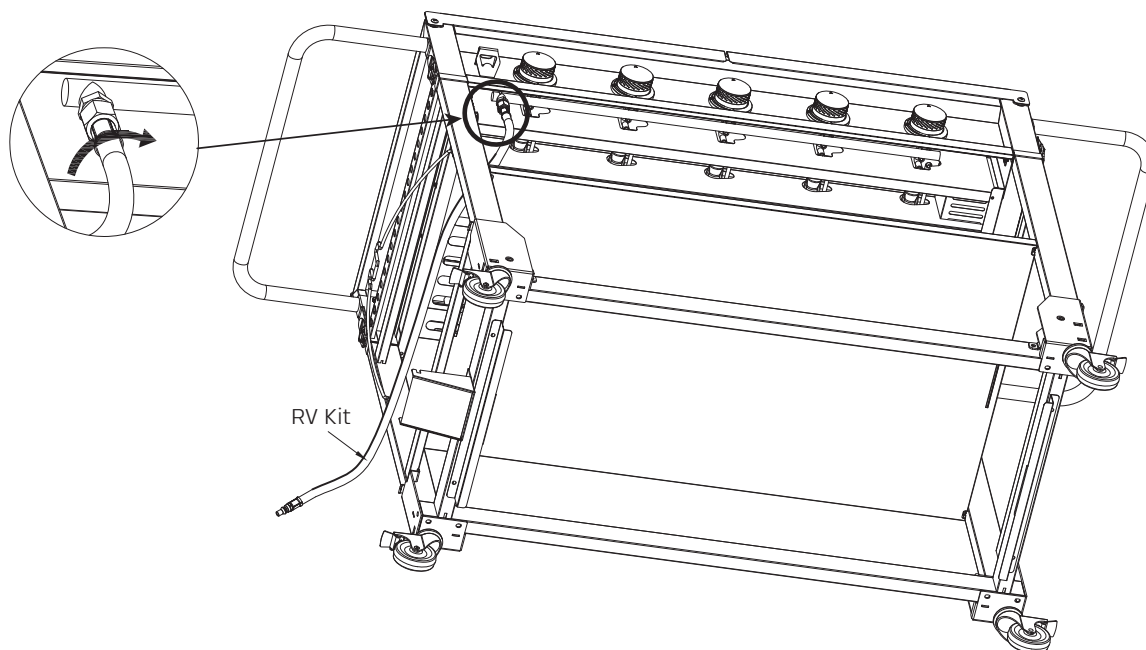
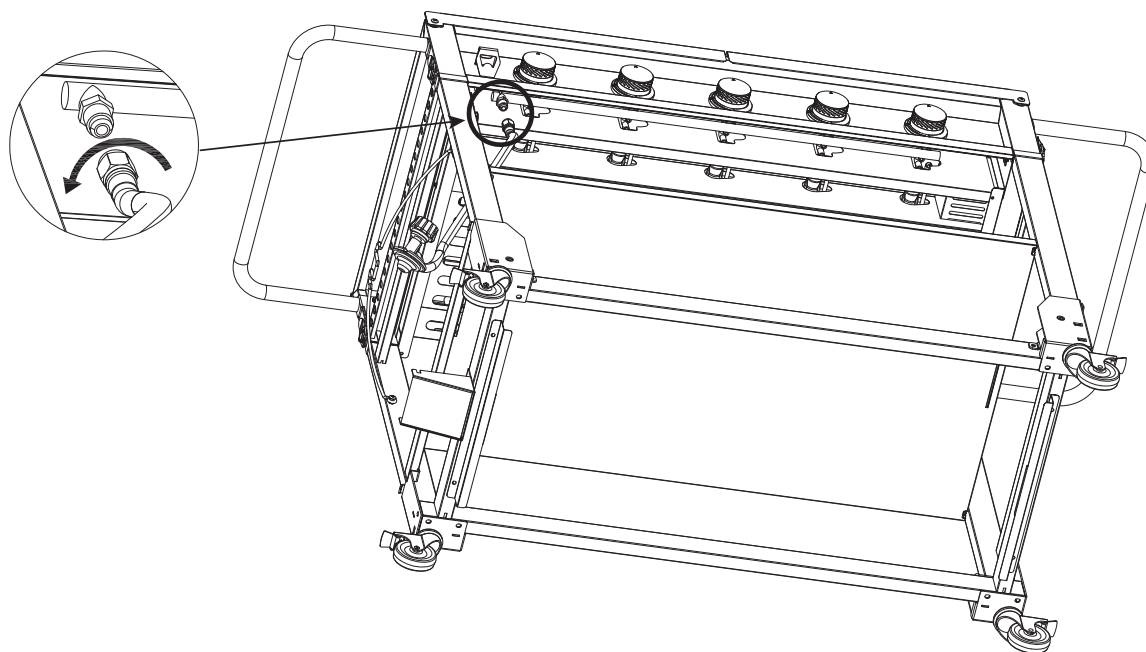
INSTALLATION

30" Gas Griddle



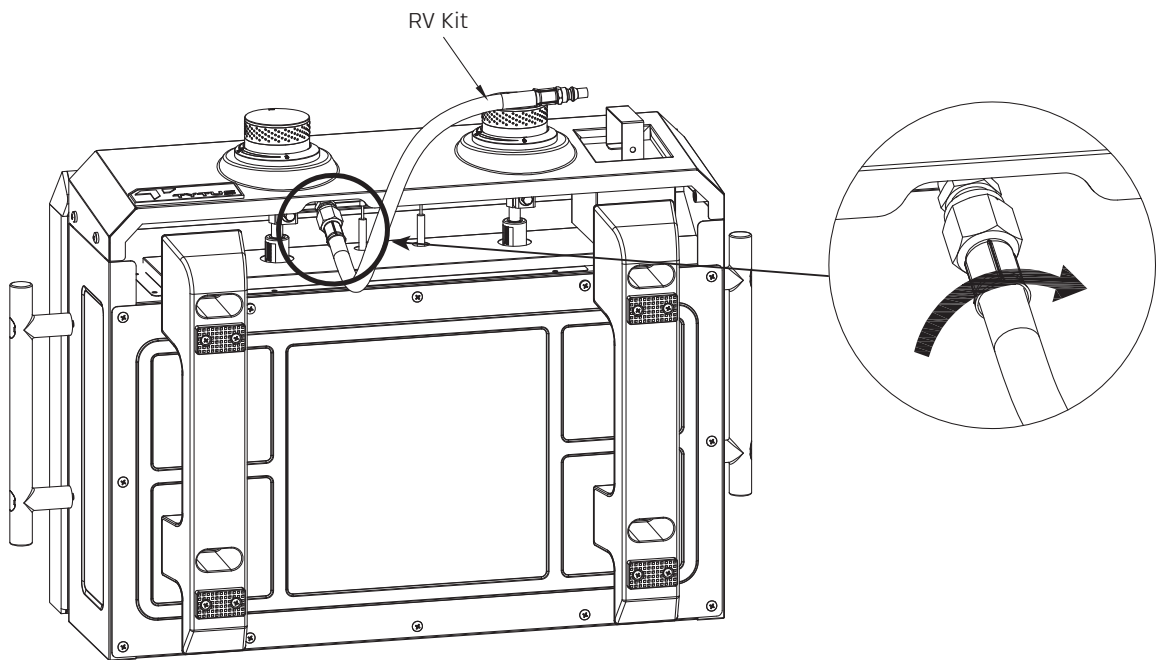
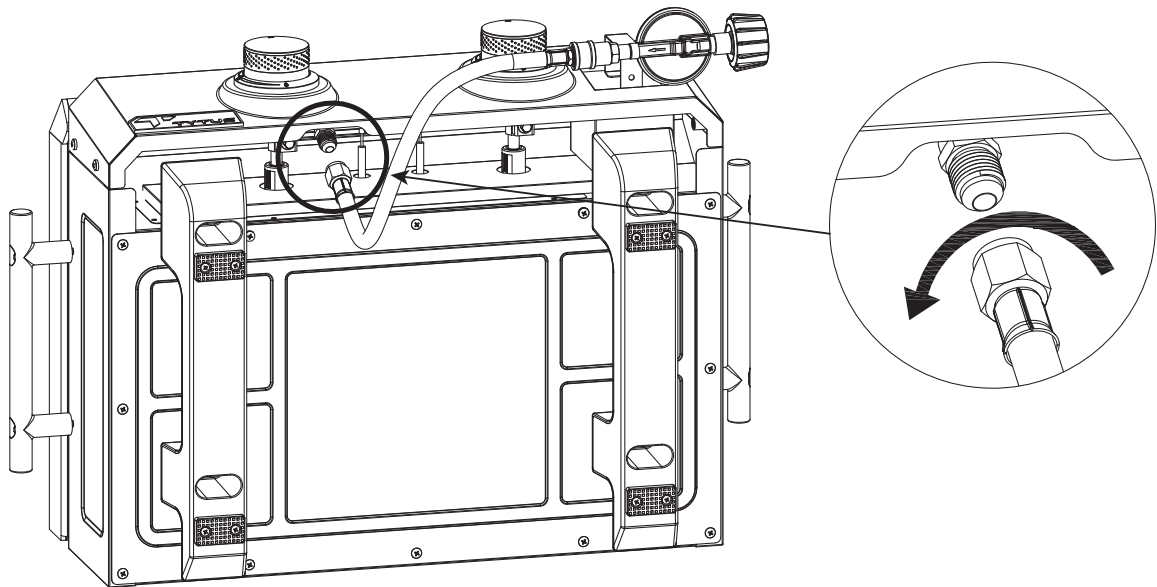


Anaheim 36" 5-Burner Gas Griddle



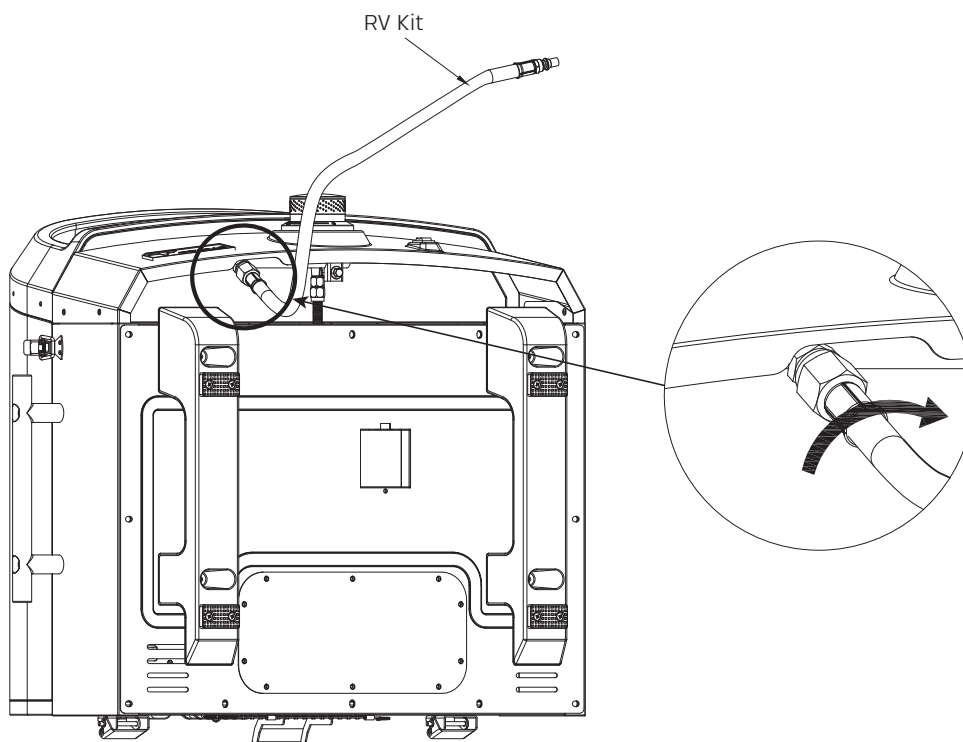
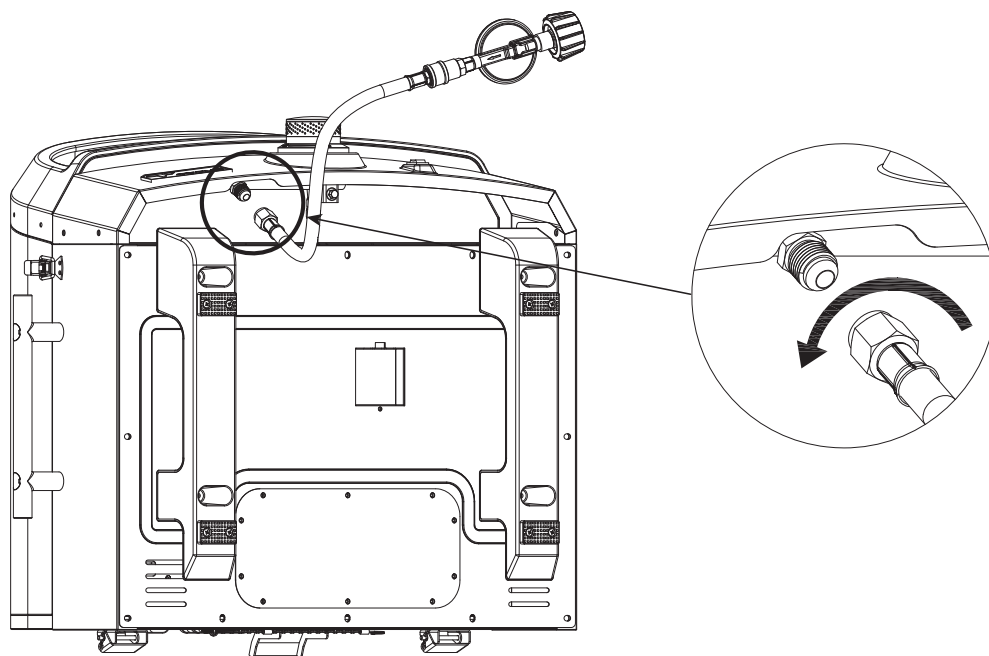
INSTALLATION

Portable Gas Griddle





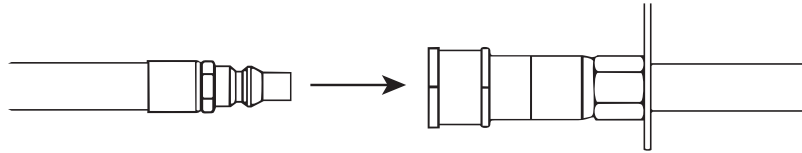
Portable Gas Pizza Oven



INSTALLATION

STEP 3

Connect your male quick connector to the female quick connector on your RV hook up.



STEP 4

Ensure your unit is shut off when not in use.

CHECKING FOR GAS LEAKS



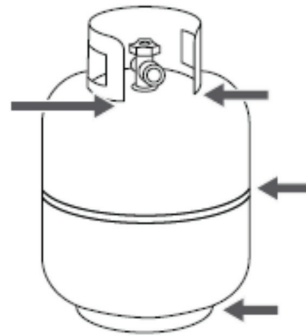
CHECKING FOR GAS LEAKS

Before first use, at the beginning of each season, or every time your propane tank is changed, you must check for gas leaks.

▲ WARNING: Your grill must be leak tested outdoors in a well-ventilated area, away from ignition sources such as gas-fired or electrical appliances. During the leak test, keep your grill away from open flames or sparks.

Do not smoke when checking for gas leaks. Do not use an open flame to check for gas leaks.

1. Make a soap solution by mixing one part liquid detergent and one part water
 - a. **CAUTION:** Do not use household cleaning agents. Damage to gas assembly components can result.
2. Turn the control knob **OFF**.
3. Turn the gas on at the propane tank.
4. Apply the soap solution to all gas connections. If bubbles appear in the soap solution the connections are not properly sealed. Check each fitting and tighten or repair as necessary.
 - a. If you have a gas leak that you cannot repair, turn off the gas at the source, disconnect the fuel line from your grill, and call the TYTUS Customer Support at **(855) 969-5185**, or your gas supplier for repair assistance.
5. Brush soapy solution onto propane tank in the areas indicated by the arrows and look for growing bubbles on your propane tank.



▲ WARNING:

A strong gas smell, or the hissing sound of gas indicates a serious problem with your unit or the propane gas tank. Failure to immediately follow the steps listed below could result in a fire or explosion that could cause serious bodily injury, death, or property damage.

- Shut off the gas supply to the grill.
- Turn the control knob to **OFF**.
- Put out any flame with a fire extinguisher.
- Open the grill lid.
- Get away from the LP gas tank.
- Do not try to fix the problem yourself.
- If the odor continues or you have a fire you cannot extinguish, call your fire department. Do not call near the propane tank because your telephone is an electrical device and could create a spark resulting in fire and/or explosion.

NOTE: The normal flow of gas through the regulator and hose assembly can create a humming noise. A low volume of noise is perfectly normal and will not interfere with the operation of the unit. If the humming noise is loud and excessive you may need to purge air from the gas line or reset the regulator excess gas flow device. This purging procedure should be done every time a new propane gas tank is connected to your grill. Call TYTUS Customer Support for assistance.

SPECIFICATIONS

SPECS		MATERIALS	
Connectors	$\frac{5}{8}$ -18 UNF to $\frac{1}{4}$ -18" NPT	Quick Connectors	Brass
Hose	10-foot hose LPG/NG Hose (1PSIG - $\frac{5}{16}$ ")	Steel Connector	Galvanized Steel
		Hose	PVC

WARRANTY

TYTUS GRILLS LIMITED WARRANTY TO ORIGINAL CUSTOMER

(the "Products" or "Product" when referencing a singular product herein).

Tytus Grills, LLC ("Tytus") warrants the Products identified above to be free from defects in material and workmanship, for the relevant and specified Warranty Periods set forth below for specific parts or components of the Products, under proper use, maintenance, and care according to the owner's manual, warnings, and instructions accompanying the Products:

WARRANTY PERIODS:

TIME PERIOD COVERED:	2 years from the date of the original customer purchase*
-----------------------------	--

*** PLEASE NOTE** – Proof of purchase evidencing the date of the original customer purchase, or the date of the spare part shipment or incorporation into the Product if applicable, is **required** for all warranty service. The express warranty set forth herein (the "Warranty") is subject to all terms set forth herein below.

- 1. WARRANTY SERVICE (PARTS, LABOR AND/OR REPLACEMENT):** During the Warranty Periods set forth above, if the parts or components covered by each respective Warranty Period are determined by TYTUS or a TYTUS authorized customer service provider to be defective in material or workmanship, TYTUS will, at its sole discretion and option: (i) repair the defective part or component at no charge to the original customer, (ii) replace the defective part or component with a new or refurbished part of similar or better quality, at no charge to the original customer, or (iii) refund the original, documented purchase price of the Product (excluding tax) to the original customer upon return of the defective Product as directed by TYTUS. After the applicable Warranty Period, the customer must pay for all parts, shipping and handling, labor, and replacement costs associated with the Product or any part or component thereof, regardless of any defects in the Product or any part or component thereof.
 - a. SHIPPING COSTS:** Notwithstanding the foregoing, the customer is responsible for any shipping or transportation charges incurred to ship or otherwise deliver the Product or part(s) to TYTUS or a TYTUS authorized service provider for diagnosis, repair or replacement during or after the Warranty Periods. The customer shall not return the Product or any part or component thereof to TYTUS without TYTUS's prior written consent. TYTUS recommends that the customer insure the Product or any part or component for its full replacement cost when shipping.

WARRANTY



b. TIMING AND PROCEDURE: Before Warranty service can commence, the original customer purchaser must contact TYTUS for problem determination and service procedures. Proof of purchase in the form of a bill of sale or receipted invoice, evidencing that the Product is within the Warranty Period, MUST be presented to a TYTUS authorized customer service provider in order to obtain the requested service. Please call the Toll Free Customer Service Line at 855-969-5185 to obtain Warranty Service and Troubleshooting information. Please have your model and serial number available, along with your date of purchase of the Product. You can also visit us online at: www.tytusgrills.com. The customer shall not return the Product or any part or component thereof to TYTUS without TYTUS's prior written consent.

- 2. EXCLUSIONS AND LIMITATIONS TO WARRANTY SERVICE:** This Warranty covers manufacturing defects in materials and workmanship encountered in the normal, non-commercial use of the Product, and does not cover (a) damage or failure caused by or attributable to Product abuse or misuse, failure to follow instructions, improper installation or maintenance, alteration, accident, high cooking temperatures, outdoor humidity, outdoor temperature, chlorine, fertilizers, lawn pesticides, or chemical exposure; (b) improper or incorrectly performed repairs by non-authorized service facilities; (c) onsite customer instruction or adjustments, and any costs related to service calls to your home; (d) transportation, shipping, delivery, pickup, insurance, installation, or set-up costs; (e) costs of product removal, transportation, or reinstallation costs; (f) ordinary wear and tear, cosmetic damage, or damage due to acts of nature, including but not limited to, water, floods, wind, storm, tornado, earthquake, or fire, or due to damage caused by extraordinary impact events, such as dropping or crushing; (g) commercial use of the Product, or use of the Product for anything other than single-family household or residential use; (h) modification of the Product or any part of the Product; or (i) any food loss due to Product failure or difficulties in operating the Product.

This Warranty applies to the original customer only and does not cover Products sold AS IS or WITH ALL FAULTS. The Warranty is invalid if the factory-applied serial number has been altered or removed from the Product. This Warranty is valid only in the United States and Canada, and only applies to products purchased and serviced in the United States and Canada. All replaced parts and Products, and Products on which a refund is made, become the property of TYTUS. The addition of equipment or features to the Product that are not manufactured or recommended by TYTUS could affect the intended function of the Product, and therefore may void the Warranty. Furthermore, the exposure of the Product to chemicals, heat, cold, humidity, or other elements can affect the Product components, and therefore, the Warranty does not cover discoloration, fading, cosmetic changes, rust, or any damages or failure related to any such items. The Warranty is contingent upon the proper use, maintenance, and care of the Product. The Warranty may be void if the Product has been used in a manner contradictory to, or in violation of, the terms of the user's manual, warnings, or instructions accompanying the Product.

This Warranty is made in lieu of and supersedes all other warranties or conditions of merchantability or fitness for a particular purpose or general use, whether express, implied, collateral, statutory, or provided by common law, the Uniform Commercial Code, or otherwise. TYTUS further disclaims all warranties after the end of the Warranty Period defined above. No other express warranty or guaranty given by any other person, firm, or entity with respect to the Product shall be binding on TYTUS. Repair, replacement, or refund of the original purchase price, at TYTUS's sole discretion, are the exclusive remedies of the customer. TYTUS shall not be liable for any incidental or consequential damages caused by the use, misuse or inability to use the Product. These include but are not limited to any damages in the form of lost profits, loss of use, legal fees, economic loss, personal injuries, or any other damages caused by circumstances beyond the control of TYTUS. Notwithstanding the foregoing, TYTUS' aggregate liability to any customer shall not exceed the purchase price of the Product. This Warranty shall not extend to anyone other than the original customer who purchased the Product, and is not transferable. No person is authorized to alter, extend, or waive the Warranty of TYTUS.

Some states do not allow the exclusion or limitation of incidental or consequential damages, or allow limitations on warranties, so the above limitations or exclusions may not apply to you. This Warranty gives you specific rights, and you may have other rights, which vary from state to state. The exclusions and limitations to the Warranty apply to the maximum extent permitted by law and unless restricted or prohibited by law. Where any term of this Warranty is prohibited by applicable law, it shall be null and void, but the remainder of this Warranty shall remain in effect.

PLEASE DIRECT ALL CORRESPONDENCE TO:

TYTUS Grills, LLC
support@tytusgrills.com | 855-969-5185 | www.tytusgrills.com

PLEASE CONTACT CUSTOMER SERVICE TO CONFIRM PRODUCT RETURN ADDRESS AND PROCEDURES FOR WARRANTY.



TYTUS and TYTUS Grills are trademarks of TYTUS Grills, LLC.
© 2024 TYTUS Grills, LLC. Designed in the USA. Made in China.
Distributed by TYTUS Grills, LLC, Edina, MN.