

### WEEDS AWAY Accessories



Screen Kits (aka: Turtle Guard) - (24400) 1" grid plastic coated grid protects from foreign objects entering units.



Timer - (26100/26200) Control your unit based on times that work for your environment; extra trippers available. 115V unit plugs into the timer, 230V units hard wires. Mechanical set-up.



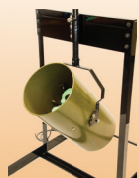
Quick Disconnect Cord - (143050 - 143400615) SJTOW wire; UL & CSA approved - underwater rated 3-wire cable potted quick disconnect 115V NEMA 5-15P plug | 230V NEMA 6-15P plug; available in 50' increments from 50' to 400'



Brackets - (20200) Sold as a set of 4



Motor Assembly - (VARIOUS) Available for any horsepower. Replacing the heart of your unit is quick and easy; comes with motor in canister, brackets, propeller, anode, and power cord. 2-year warranty



New for 2022!  
Shallow Water Stand - (75015) Made with powder coated solid steel construction, the new Shallow Water Stand gives your Ice Eater full range of motion and allows you to use your Ice Eater without a dock. Stand is able to be submerged to sit on the surface  
\* Bail fits both our Ice Eater and the Weeds Away for all year use



Propellers - (20005-20000) Replacement part for W-series Weeds Away. Engineered to obtain necessary strength & flexibility.



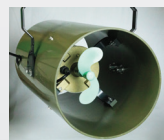
Sacrificial Anode - (24901) Allen key included. Aluminum alloy anode protects units from corrosion & electrolysis.



Electrolysis Kit - (26000) Secondary sacrificial anode strapped to the motor can for extra protection in extremely brackish & salty water



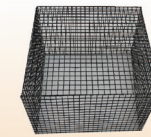
Dock Mount - (75000) Position your Weeds Away with ease. Manually adjustment allows the Weeds Away to systematically clear your entire dock area.



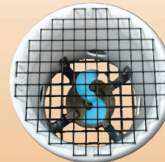
Shroud - (50000) Patented heavy-duty PVC housing designed for superior water flow.



New for 2022!  
Stop Collar - (75012) For use with Dock Mount and Shallow Water Stand. Slide the collar down the pole to allow free range of motion to your unit.



Float Cage - (24100) Protects units from foreign objects being pulled into the intake; attaches to square float in minutes. Made of 14 gauge steel wire that is black plastic coated. Now available in 1"x1" or 1/2"x1/2".



Screen Kits (aka: Turtle Guard) - (24500) 1" grid plastic coated grid protects from foreign objects entering units. Made of 14 gauge steel wire that is black plastic coated.



Timer - (26100/26200) Control your unit based on times that work for your environment; extra trippers available. 115V unit plugs into the timer, 230V units hard wires. Mechanical set-up.



Down Tube - (26050) Fits F750DP & F1000DP. Extension tube to increase the depth of water intake for very deep waterways. Made out of Heavy Duty PVC.



Quick Disconnect Cord - (143050 - 143400615) SJTOW wire; UL & CSA approved - underwater rated 3-wire cable potted quick disconnect 115V NEMA 5-15P plug | 230V NEMA 6-15P plug; available in 50' increments from 50' to 400'



Mooring Lines - (343100) (Set of 2) 25' black 3/8" hollow braided polypropylene ropes



Brackets - (20200) Sold as a set of 4. Made out of PVC.



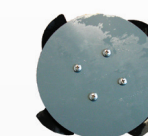
(2) 18-Watt white LED Lights - (SQ Retro 18W) 18 - Brilliant White Lights (colored lenses available) 1980 Lumens. 2 Fixture feature fits all surface aerators & aerating fountains. Comes with a quick disconnect.



Colored Lenses - (41801 - 41808) Come in 8 colors. Dark Blue, Dark Green, Dark Red, Dark Yellow, Amber, Fluorescent Green, Fluorescent Red & Light Blue



Dual Propellers - (20008) Replacement part for F-series dual prop surface aerators. Engineered to obtain necessary strength & flexibility. 2nd prop gives 25% more water flow.



Prop and Disc - (30000) Impeller that fits the F500F & F1000F units. Stainless steel insert screws on to shaft for more durability.



F1500TP Propeller - (20010) Replacement part for F-series triple prop surface aerators. Engineered to obtain necessary strength & flexibility. Made out of stainless steel.



Propellers - (20001-20002) Replacement part for F-series surface aerators. Engineered to obtain necessary strength & flexibility.



Sacrificial Anode - (24901) Allen key included. Aluminum alloy anode protects units from salty, brackish water & electrolysis.



Electrolysis Kit - (26000) Secondary sacrificial anode strapped to the motor can for extra protection in extremely brackish & salty water



Float - (34000) Made from a heavy duty PVC type material. Foam filled for buoyancy.



Float Ring - (24010) Made from a heavy duty PVC type material.





# BEARON AQUATICS

ICE EATERS | OLYMPUS FOUNTAINS | POWER HOUSE AERATION



# BEARON AQUATICS

ICE EATERS | OLYMPUS FOUNTAINS | POWER HOUSE AERATION



## OLYMPUS FOUNTAIN Accessories



Nozzles - (91501 - 92013) Change your Olympus Fountain pattern with ease; multiple pattern options available for every horsepower



Timer - (26100/26200) Control your unit based on times that work for your environment; extra trippers available. 115V unit plugs into the timer, 230V units hard wires. Mechanical set-up.



Quick Disconnect Cord - (143050 - 143400615) SJTOW wire; UL & CSA approved - underwater rated 3-wire cable potted quick disconnect 115V NEMA 5-15P plug | 230V NEMA 6-15P plug; available in 50' increments from 50' to 400'



(2) 18-Watt white LED Lights - (Oly Sm. 18W) 18 - Brilliant White Lights (colored lenses available) 1980 Lumens per light. (Compatible with .5 & 1.0 HP)



(3) 18-Watt white LED Lights - (Oly Lg. 18W) 18 - Brilliant White Lights (colored lenses available) 1980 Lumens per light. (Compatible with 1.5 & 3.0 HP)



Extension Tube (6", 12", 18") - (41100) Used to elevate the nozzle to the correct height in a shallow pond setting, allowing for a maximum of 36" in height.



Float - (34010 - 34030) Available for every horsepower of floating Olympus Fountain.



Colored Lenses - (41801 - 41808) Come in 8 colors. Dark Blue, Dark Green, Dark Red, Dark Yellow, Amber, Fluorescent Green, Fluorescent Red & Light Blue



(2) - 6 Watt white LED lights - (Oly 6W LED) Brilliant White Light (colored lenses available). 660 Lumens per light. 2 Fixtures (Compatible with .33 HP)



Screen Kits (aka: Turtle Guard) - (24500) 1" grid plastic coated grid protects from foreign objects entering units.



Timer - (26100/26200) Control your unit based on times that work for your environment; extra trippers available. 115V unit plugs into the timer, 230V units hard wires. Mechanical set-up.



Thermostats - (KT16110-KP16220) Ambient air temperature thermostats allow your unit to turn on & off as weather dictates; set anywhere between 0-80 degrees. Available in 115v or 230v.



Quick Disconnect Cord - (143050 - 143400615) SJTOW wire; UL & CSA approved - underwater rated 3-wire cable potted quick disconnect 115V NEMA 5-15P plug | 230V NEMA 6-15P plug; available in 50' increments from 50' to 400'



Mooring Lines - (50100) (set of 2) 25' blue 3/8" thick hollow braided polypropylene ropes



Brackets - (20200) Sold as a set of 4



Motor Assembly - (VARIOUS) Available for any horsepower. Replacing the heart of your unit is quick and easy; comes with motor in canister, brackets, propeller, anode, and power cord. 3-year warranty



Propellers - (20001-20002) Replacement part for F-series surface aerators. Engineered to obtain necessary strength & flexibility.



Sacrificial Anode - (24901) Allen key included. Aluminum alloy anode protects units from corrosion & electrolysis.



Electrolysis Kit - (26000) Secondary sacrificial anode strapped to the motor can for extra protection in extremely brackish & salty water



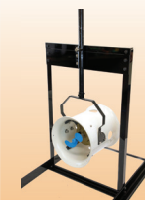
Dock Mount - (75000) Position your Ice Eater with ease. 1" x 6' steel pole and mounting fasteners not included.



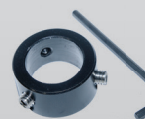
Shackles - (24600) (Set of 2) 1/4" stainless steel with 9/64 short arm hex key



Shroud - (69012 - 69010) Various sizes available to fit specific Ice Eater type. Patented heavy-duty PVC Venturi housing designed for superior water flow



New for 2022!  
Shallow Water Stand - (75015) Made with powder coated solid steel construction, the new Shallow Water Stand gives your Ice Eater full range of motion and allows you to use your Ice Eater without a dock. Stand is able to be submerged to sit on the surface  
\* Bail fits both our Ice Eater and the Weeds Away for all year use



New for 2022!  
Stop Collar - (75012) For use with Dock Mount and Shallow Water Stand. Slide the collar down the pole to allow free range of motion to your unit.

(Customer friendly Lighting Features can be retrofitted at time of purchase or at a later date!)