



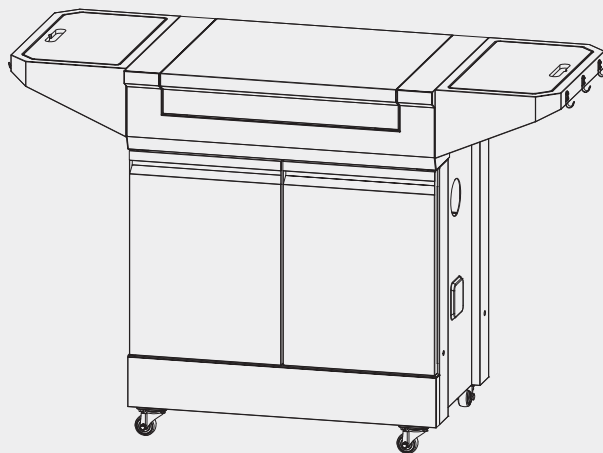
USER MANUAL

Grill & Prep Cart

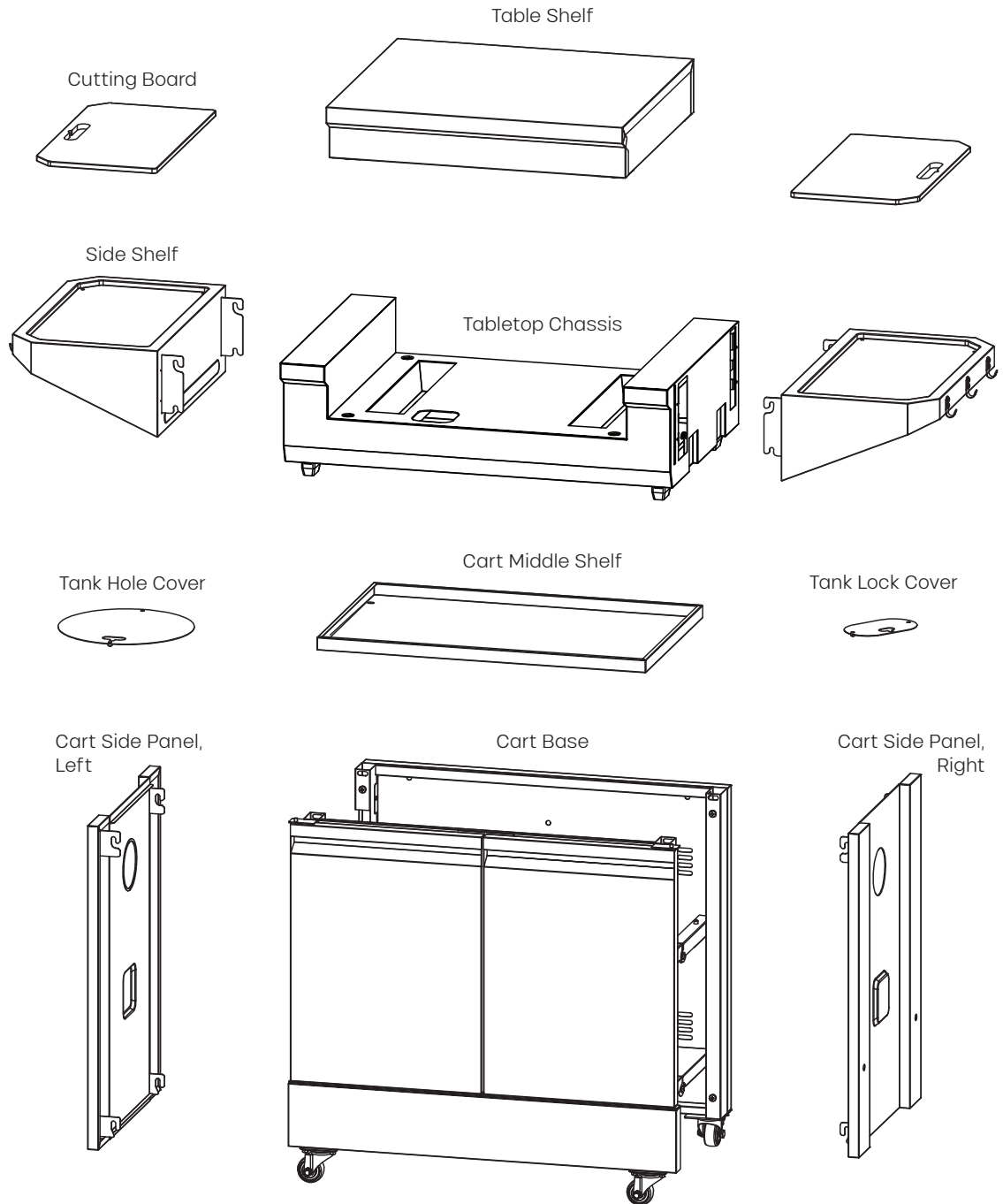
Model: TDT-GHS-XLCT

CONTENTS

- 1 What's in the Box
- 2 Assembly Instructions
- 8 Modular Compatibility
- 14 Specifications
- 15 Parts Diagram & List
- 17 Warranty



WHAT'S IN THE BOX



1 Wing Nut Screw (Not Pictured)

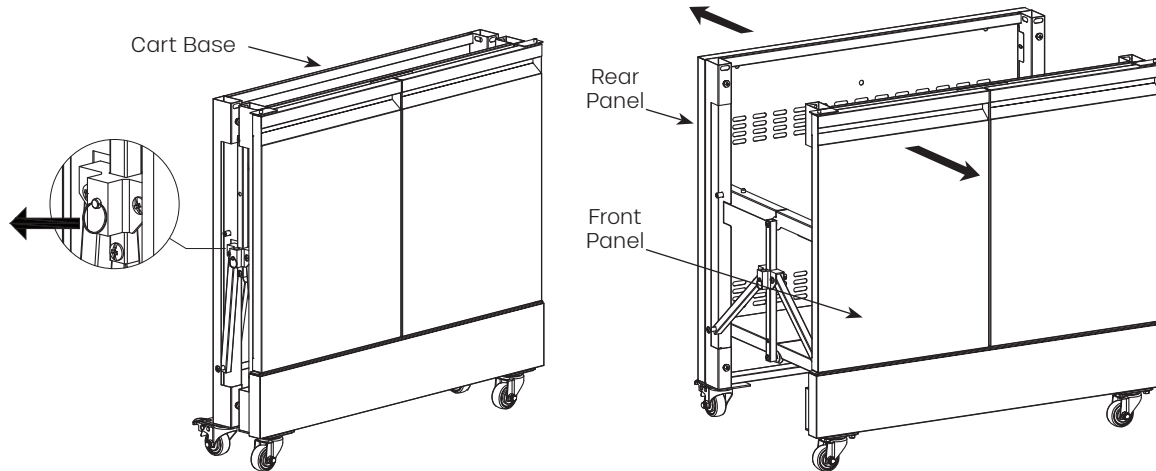
ASSEMBLY INSTRUCTIONS



STEP 1

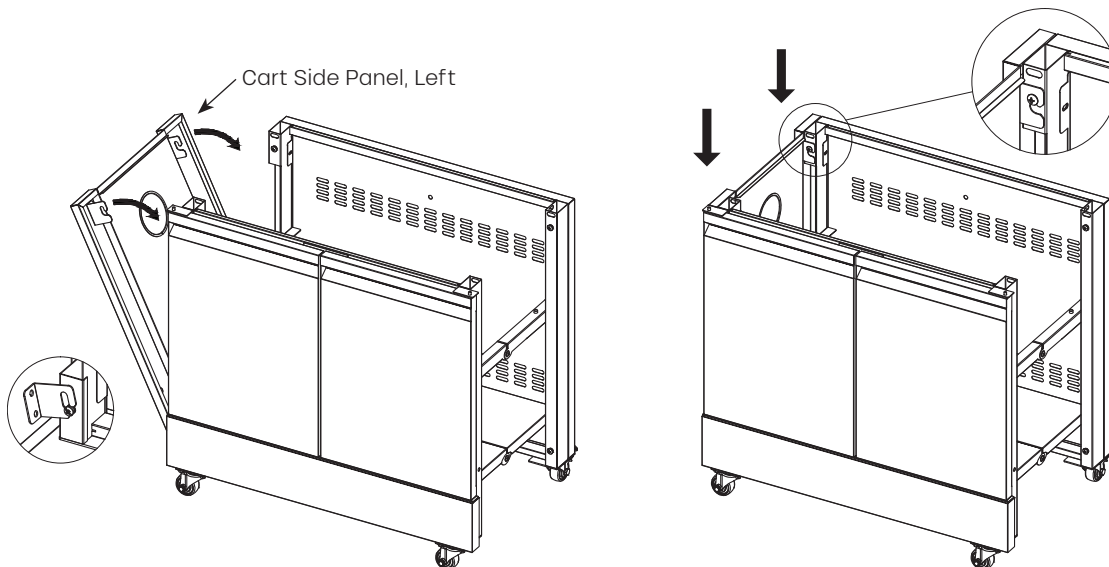
Set the Grill & Prep Cart on its casters. Pull the captive pin on the left side of the cart, then pull front and rear panels apart. When the cart is expanded and the bottom shelf is flat and secure, the pin will lock into place. The pin can't be completely removed from the side cart.

Note: With the side panels and prep table removed from your cart, you can access the rear of the center kick plate to remove the two screws securing the kick plate to the cart's frame.



STEP 2

Line up the bottom of one panel with the bolts on the cart at a 45-degree angle. Rotate the panel upwards towards the top bolts on cart and push it down into place.



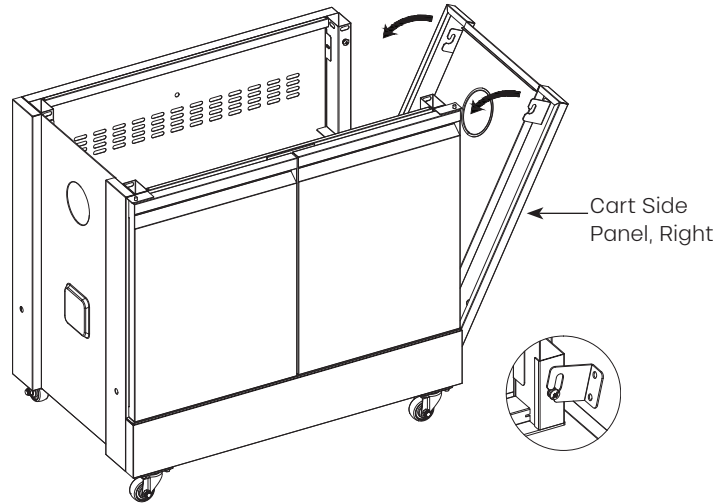
TIPS: Have a partner hold the side cart steady while installing the side panels.

Make sure the side panel is securely fastened. The panel should not pull away from the side cart at the top or bottom.

ASSEMBLY INSTRUCTIONS

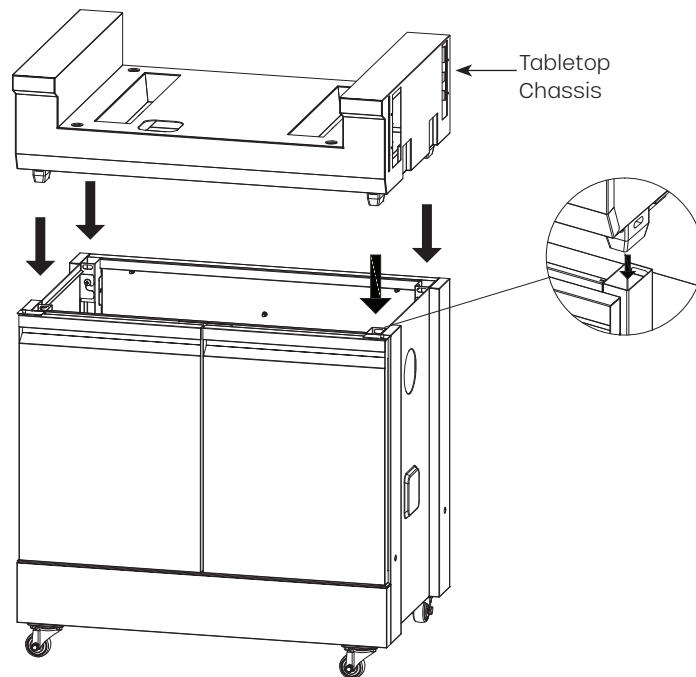
STEP 3

Repeat Step 2.



STEP 4

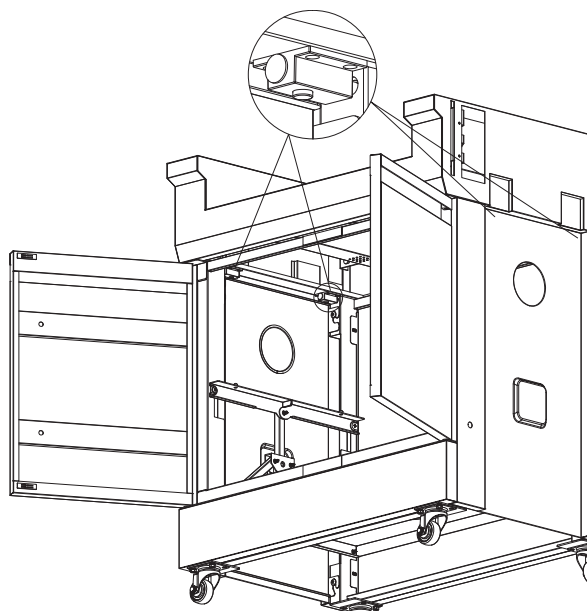
Place the tabletop chassis onto the cart, aligning the four plastic feet with the slots in the cart's frame.





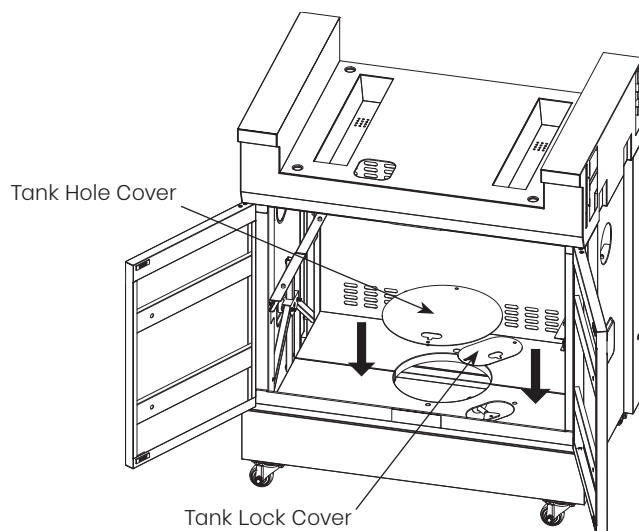
STEP 5

Lock the tabletop chassis in place with the four spring-pins in the corners of the tabletop chassis. Note, the image shows the spring pin in the locked position.



STEP 6

Place the tank hole cover and the tank lock hole cover into the slots in the bottom shelf. These must be removed if you plan to install a propane tank into the cart to use a portable gas grill with the Grill & Prep Cart. If you connect the Grill & Prep Cart to a TYTUS Anaheim 4-Burner Gas Grill, you can leave the tank hole cover and tank lock hole cover in place, as you will use the propane tank in the Anaheim 4-Burner Gas Grill to power your gas portable unit.

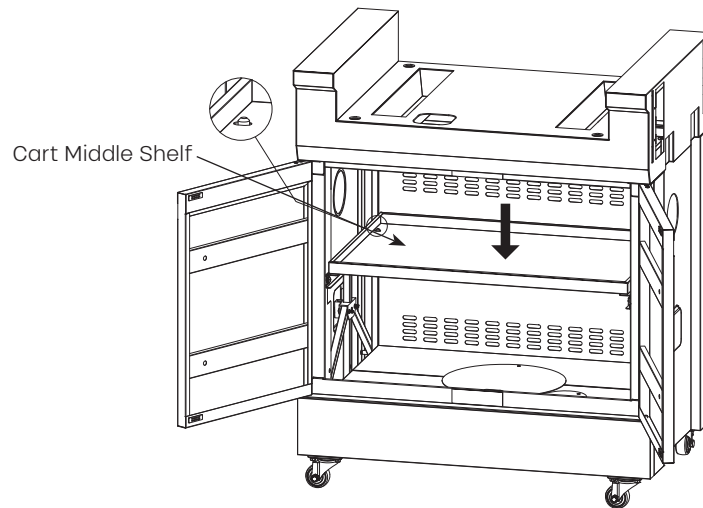


ASSEMBLY INSTRUCTIONS

STEP 7

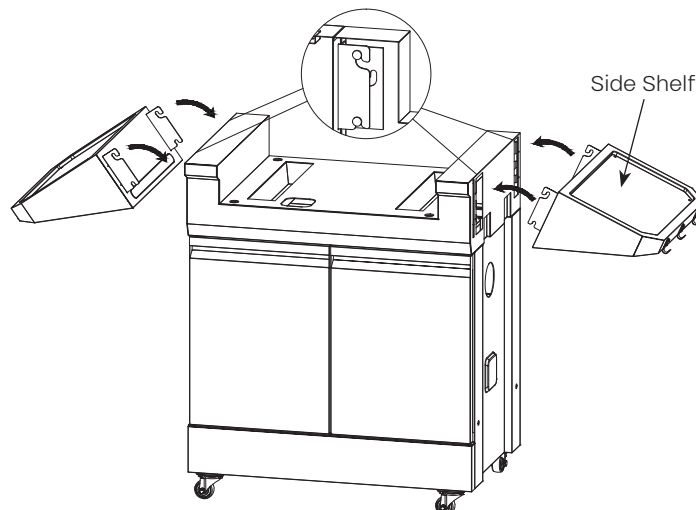
Install your center shelf in the Grill & Prep Cart by aligning the four holes with the four pins on the shelf support bar. The flat side of the shelf faces towards the ground.

- To use the Grill & Prep Cart with a portable gas unit, without attaching to the Anaheim 4-Burner Gas Grill, remove the center shelf from the cabinet, and store it on the rear of the cabinet, using the provided hooks.
- If you are attaching your Grill & Prep Cart to an Anaheim 4-Burner Gas Grill, you can use the propane tank installed in the grill to power your gas portable unit, and the center shelf can remain installed in the cart.



STEP 8

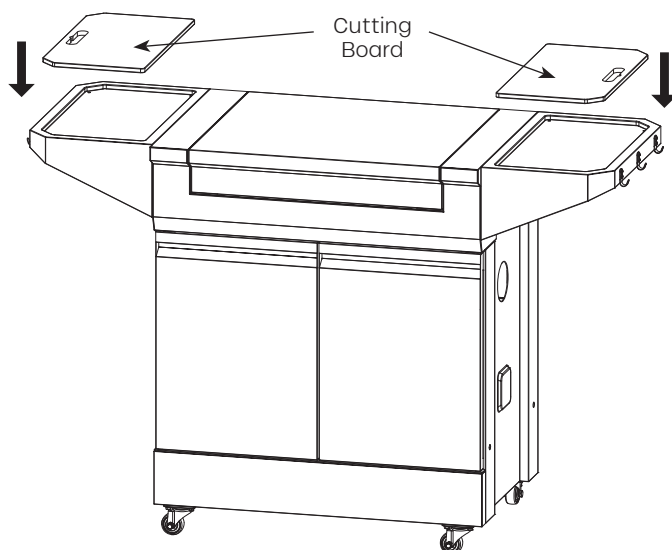
Install the side shelves onto the Grill & Prep Cart. Align the hooks on each shelf with the pegs on the inside of the tabletop chassis and press each shelf downward to lock it into place. Repeat on other side.





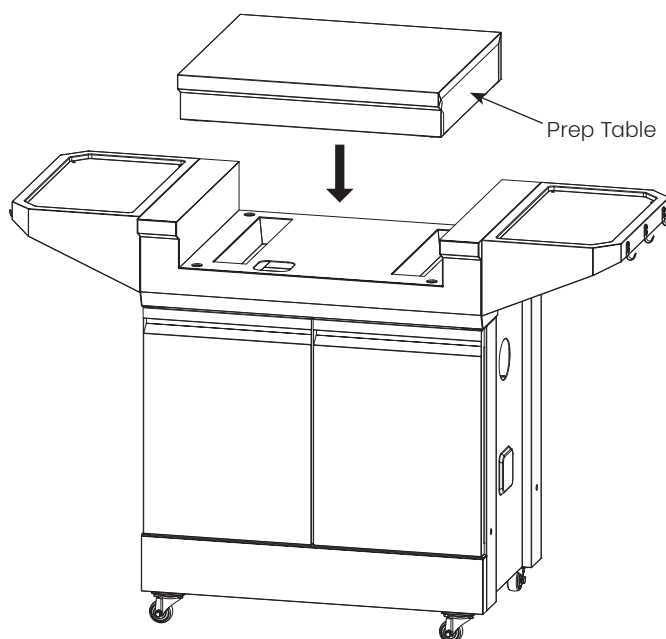
STEP 9

Place your cutting boards into the cut-outs on the top of each side shelf.



STEP 10

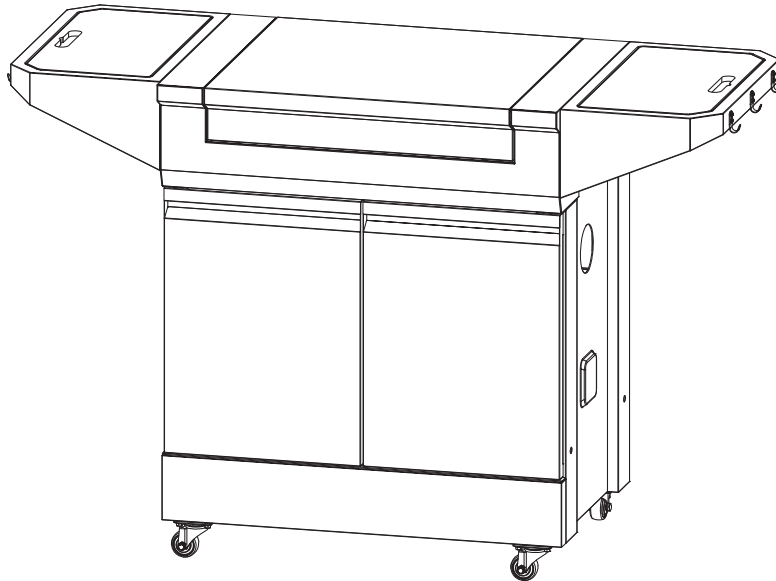
Place the prep table into the tabletop chassis to complete your Grill & Prep Cart. The bullnose aligns with the front of the unit. This must be removed to install a portable unit.



ASSEMBLY INSTRUCTIONS

STEP 11

Lock the casters on the rear of the Grill & Prep Cart to keep it in place.



DISASSEMBLY INSTRUCTIONS

- STEP 1:** Remove the portable unit or the prep table (whichever is currently installed) from the center of the top cap and set aside.
- STEP 2:** Grab each side shelf (left and right) near the top cap, and lift upwards to remove from the top cap.
- STEP 3:** Press the four red buttons inside the cart to unlock the top cap, then lift the top cap off and set aside.
- STEP 4:** Lift each side panel (left and right) up and off the cart.
- STEP 5:** Remove the cart middle shelf from the Grill & Prep Cart, if installed, and set aside.
- STEP 6:** Remove the tank hole cover and the tank lock hole cover from the bottom shelf of the Grill & Prep Cart, if installed, and set aside. If a propane tank is installed, ensure the propane valve is fully closed before disconnecting the regulator hose and removing the propane tank from the cart.
- STEP 7:** Pull the locking pin, then push the cart together until the cart locking pin locks the cart.

MODULAR COMPATIBILITY

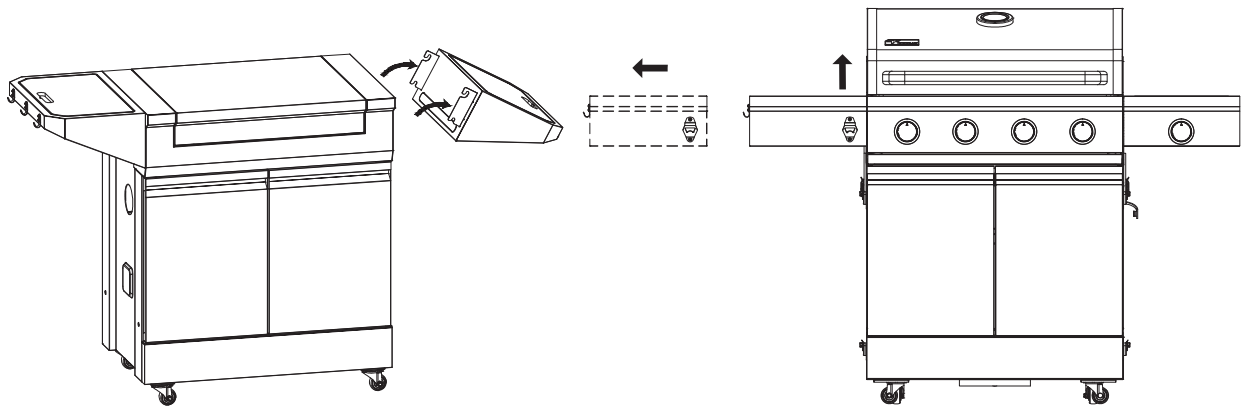


MODULAR COMPATIBILITY

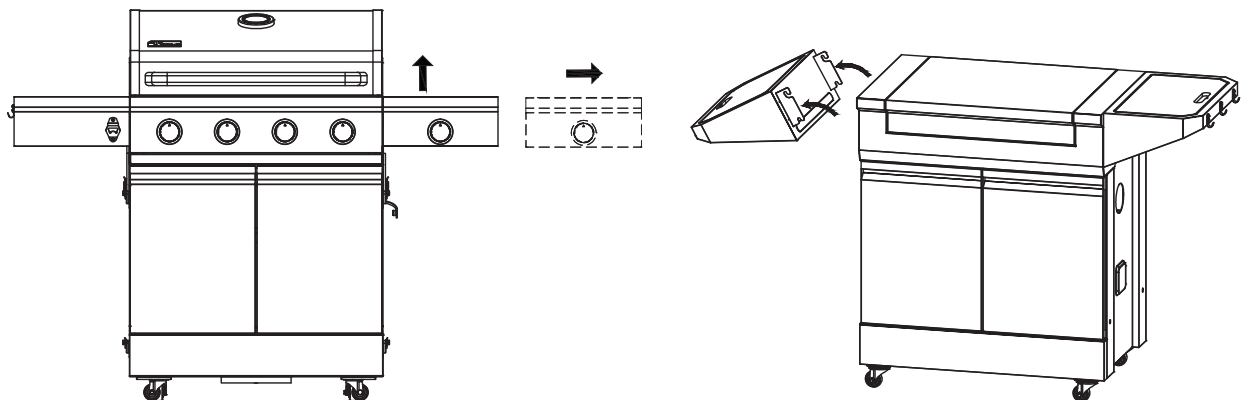
This Grill & Prep Cart is part of the **TYTUS MODULAR COLLECTION**.

To connect your Wildwood Grill & Prep Cart to the **TYTUS Modular Collection** portable units and the Anaheim 4- Burner Gas Grill, follow the instructions below.

1. To install your **Grill & Prep Cart** on the left side of your **Anaheim 4-Burner Gas Grill**:
 - Remove the right-side shelf from your Grill & Prep Cart, and the left side shelf from your Anaheim 4-Burner Gas Grill.



2. To install your **Grill & Prep Cart** on the right side of your **Anaheim 4-Burner Gas Grill**:
 - Remove the left side shelf from your Grill & Prep Cart, and the right-side shelf from your Anaheim 4-Burner Gas Grill.

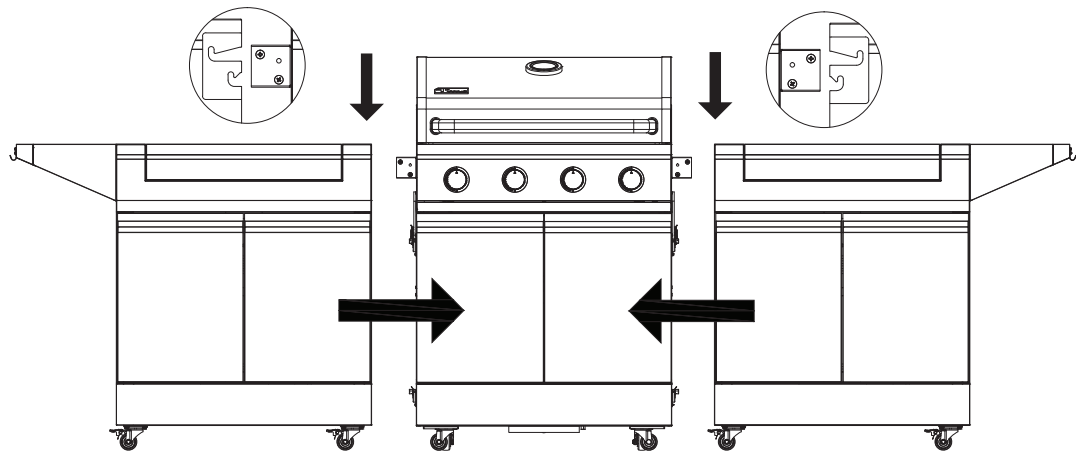


MODULAR COMPATIBILITY

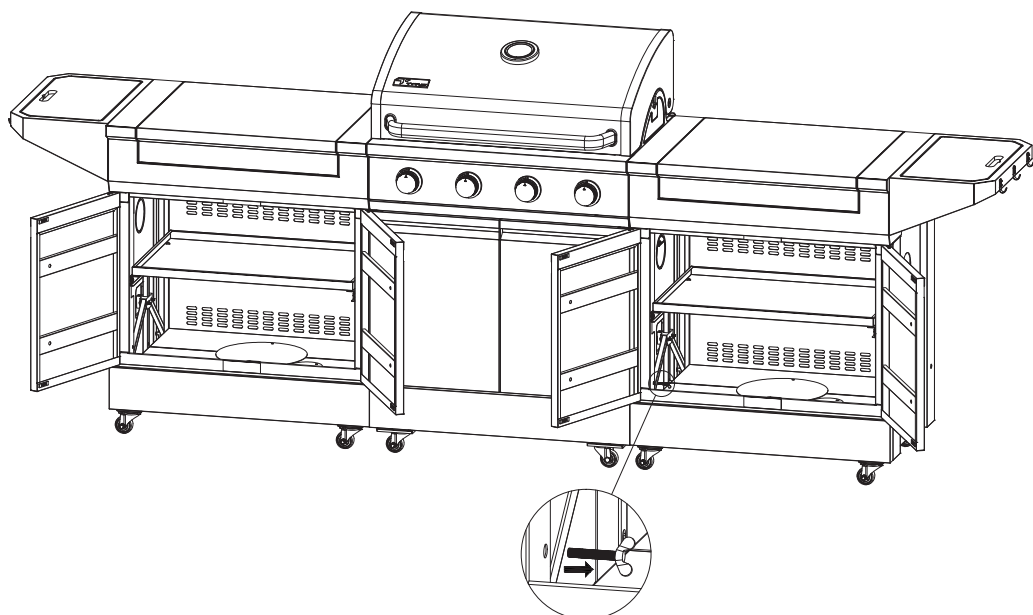
3. With two people, line up the Grill & Prep Cart on the side of the Anaheim 4-Burner Gas Grill, ensuring the doors are facing the same side, and press the cart onto the brackets attached to the brackets on the burner box of the grill.

NOTE: It is easiest to install a Grill & Prep Cart to the left or right side of the Anaheim 4-Burner Gas Grill when the portable tabletops are momentarily lifted off the Grill & Prep Carts and set aside during assembly.

NOTE: Gas powered units should be placed on the **RIGHT** side of the Anaheim 4-Burner Grill, while electric or charcoal units can be placed on the left or right side of the Anaheim 4-Burner Gas Grill.

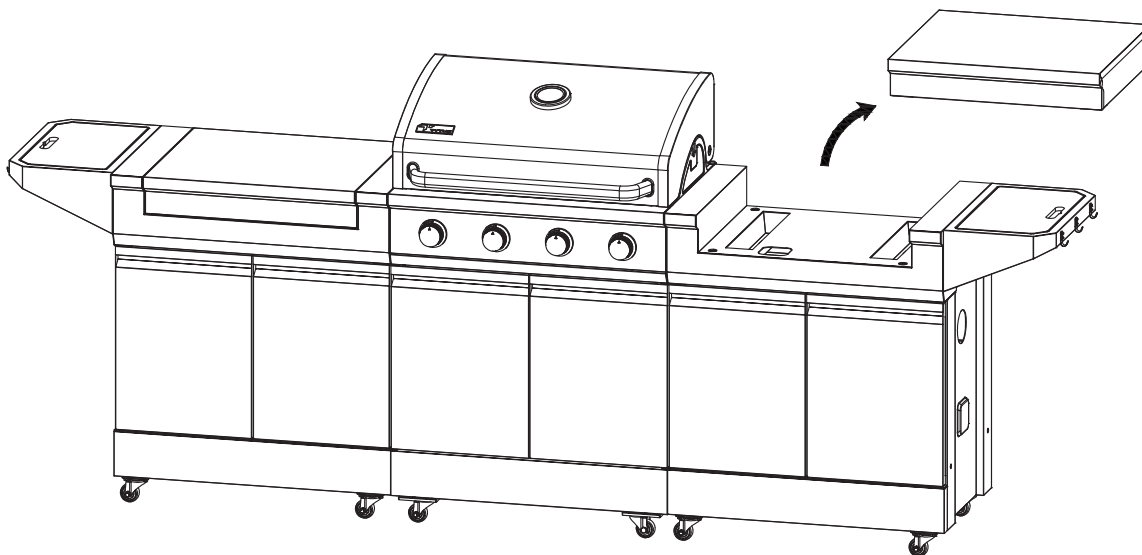


4. To secure your Grill & Prep Cart to your Anaheim 4-Burner Gas Grill, use the provided wingnuts to connect the carts at the bottom front. You will need to open your cart doors to do this.

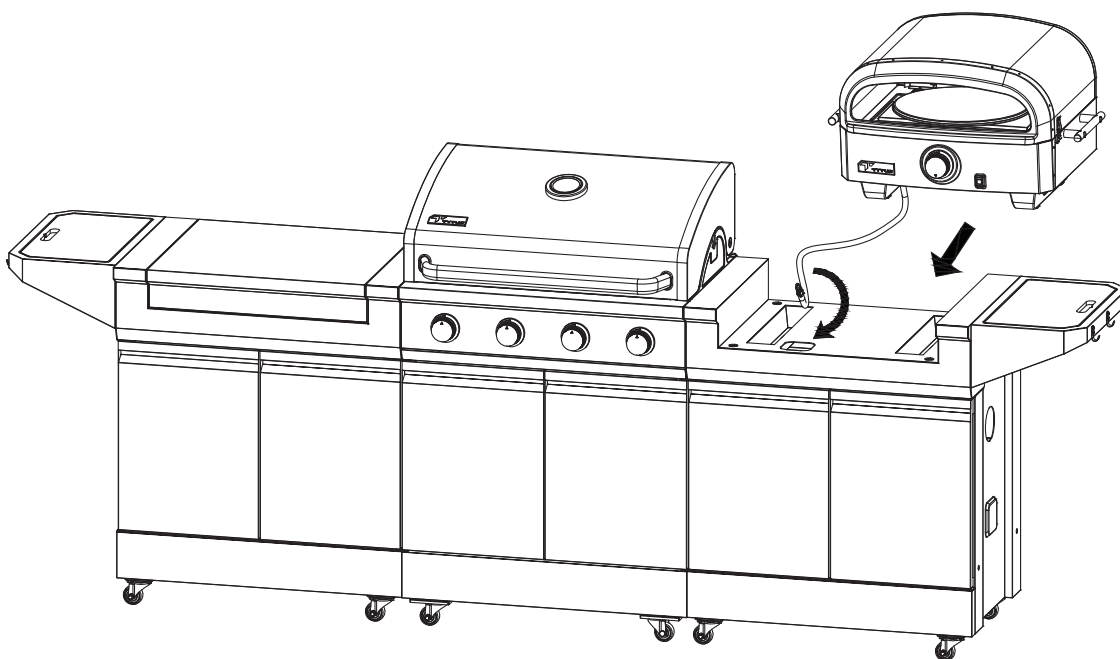




5. To connect a gas tabletop to the **RIGHT** Grill & Prep Cart, remove the center prep table.

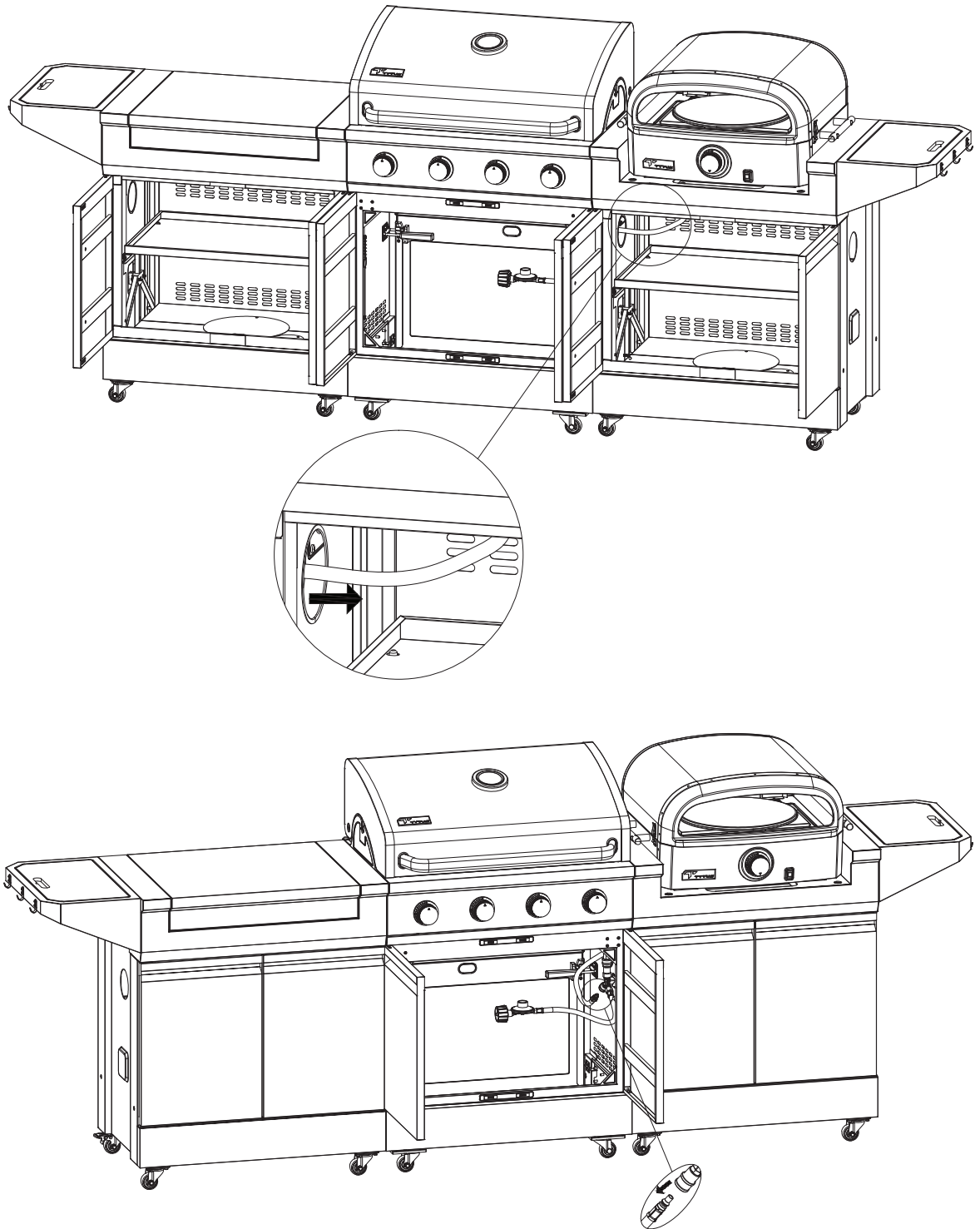


6. Place your portable unit on your Grill & Prep Cart, threading the gas hose through the center access hole.



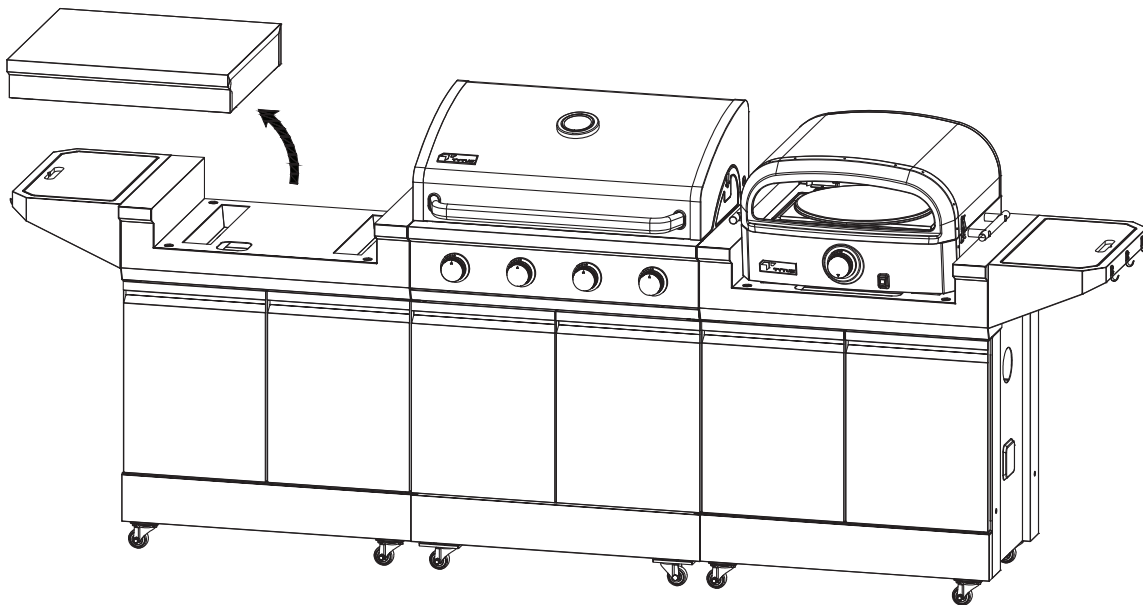
MODULAR COMPATIBILITY

7. Thread the gas hose through the side panels and connect to the "T" gas hose assembly inside the main cart of the Anaheim 4-Burner Gas Grill.

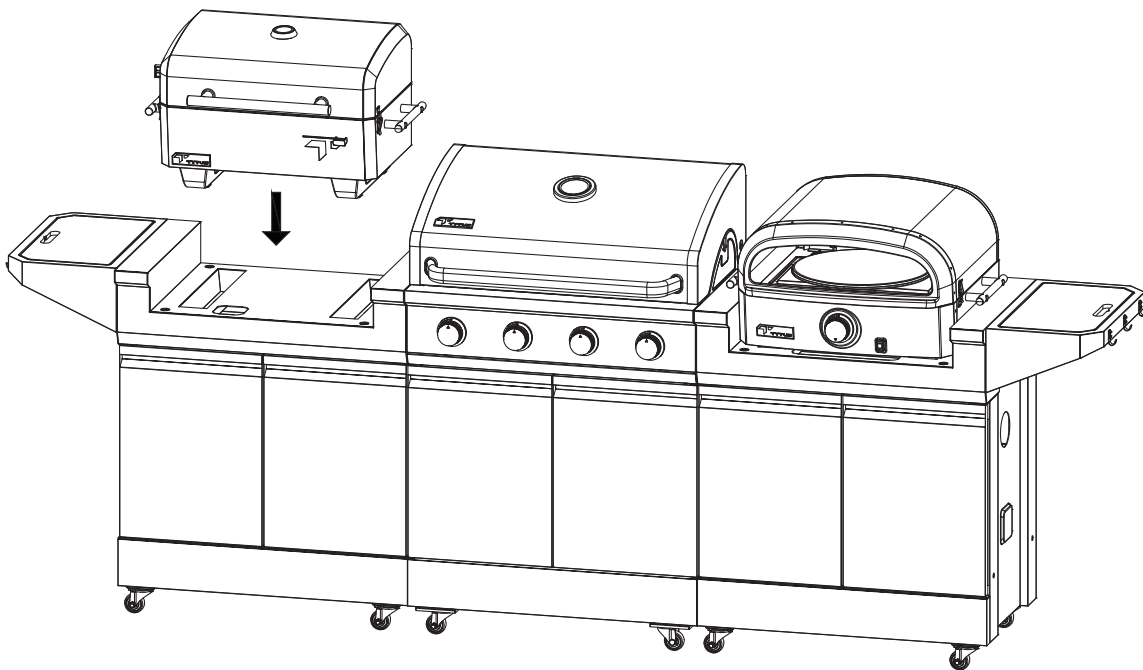




8. To connect an electric or charcoal tabletop to the left or right Grill & Prep Cart, remove the center prep table.

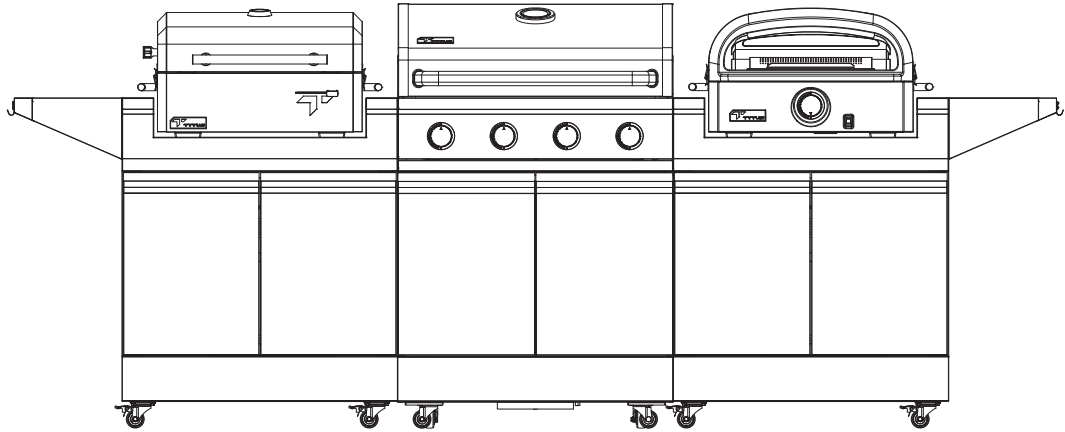


9. Place the portable grill into the chassis.



MODULAR COMPATIBILITY

10. Completed Modular Grill.



SPECIFICATIONS



DIMENSIONS	
Assembled Width	55.3 inches
Assembled Depth	20.7 inches
Assembled Height	36.3 inches
Main Prep Area (W & D)	462.3 sq. inches (23" by 20.1")
Secondary Prep Area (W & D)	337.92 sq. inches (2 x 17.6" by 9.6")
Total Prep Area	814.02 sq. inches
Total Storage	4.7 cubic feet

SPECS	
Fuel Type	Compatible with all portable units
Tool Hooks	6
Side Shelves	2
Casters	4
Warranty	1 year limited

MATERIALS	
Cart Finish	Gunmetal





PARTS LIST

Part #	Description	QTY	TYTUS Part #
1	Tabletop chassis	1	DJ-50015-01
2	Locking click	4	TFR-LCT-086
3	Top cap feet	4	TFR-LCT-085
4	Cutting board	2	DJ-50015-04
5	Side table	2	DJ-50015-05
6	Tool hook	6	TFR-SHF-045
7	Prep table	1	DJ-50015-07
8	Prep table gasket	4	DJ-50015-08
9	Cart side panel R	1	DJ-50015-09
10	Cart rear panel	1	DJ-50015-10
11	Cart cabinet frame, rear	1	DJ-50015-11
12	Cabinet shelf front bracket	2	DJ-50015-12
13	Cabinet shelf rear bracket	2	DJ-50015-13
14	Folding tube-long	1	TFR-LCT-089
15	Folding tube-short	2	TFR-LCT-088
16	Locking clip	1	TFR-LCT-090
17	Cart middle panel	1	DJ-50015-17

Part #	Description	QTY	TYTUS Part #
18	Door frame	1	DJ-50015-18
19	Cart side panel L	1	DJ-50015-19
20	Door pin	2	TFR-MCT-042
21	Magnet	4	DJ-50015-21
22	Door, left	1	DJ-50015-22
23	Door, right	1	DJ-50015-23
24	Gas cylinder fixed gasket	1	DJ-50015-24
25	Gas cylinder fixed screw	1	DJ-50015-25
26	Bottom hole cover plate (tank hole)	1	DJ-50015-26
27	Bottom hole cover plate (lock)	1	DJ-50015-27
28	Cart front panel	1	DJ-50015-28
29	Caster with brake	2	TFR-MCT-083
30	Caster without brake	2	TFR-MCT-082
31	Cabinet shelf 1	1	DJ-50015-31
32	Cabinet shelf 2	1	DJ-50015-32

WARRANTY

TYTUS GRILLS LIMITED WARRANTY TO ORIGINAL CUSTOMER

(the "Products" or "Product" when referencing a singular product herein).

Tytus Grills, LLC ("Tytus") warrants the Products identified above to be free from defects in material and workmanship, for the relevant and specified Warranty Periods set forth below for specific parts or components of the Products, under proper use, maintenance, and care according to the owner's manual, warnings, and instructions accompanying the Products:

WARRANTY PERIODS:

PARTS OR COMPONENTS COVERED:	TIME PERIOD COVERED:
Powder-coated and Porcelain-coated parts of the Product	1 year from the date of the original customer purchase*
All other parts of the Products not specified above (excluding spare parts discussed below)	1 year from the date of the original customer purchase*
Any spare parts provided by Tytus for use in any of the Products, and any replacement parts used in a repair performed by an authorized Tytus dealer.	90 days from the date the spare or replacement part is first shipped to the customer, or the date the part is incorporated into the Product by an authorized Tytus dealer, whichever comes first. *

WARRANTY PERIODS EFFECTIVE IF AND ONLY IF PRODUCT IS REGISTERED BY ORIGINAL CUSTOMER WITHIN 90 DAYS OF PURCHASE:

PARTS OR COMPONENTS COVERED:	TIME PERIOD COVERED:
Powder-coated and Porcelain-coated parts of the Product	2 years from the date of the original customer purchase*
All other parts of the Products not specified above (excluding spare parts discussed below)	2 years from the date of the original customer purchase*
Any spare parts provided by Tytus for use in any of the Products, and any replacement parts used in a repair performed by an authorized Tytus dealer.	90 days from the date the spare or replacement part is first shipped to the customer, or the date the part is incorporated into the Product by an authorized Tytus dealer, whichever comes first. *

*** PLEASE NOTE** – Proof of purchase evidencing the date of the original customer purchase, or the date of the spare part shipment or incorporation into the Product if applicable, is **required** for all warranty service. The express warranty set forth herein (the "Warranty") is subject to all terms set forth herein below.

- 1. WARRANTY SERVICE (PARTS, LABOR AND/OR REPLACEMENT):** During the Warranty Periods set forth above, if the parts or components covered by each respective Warranty Period are determined by Tytus or a Tytus authorized customer service provider to be defective in material or workmanship, Tytus will, at its sole discretion and option: (i) repair the defective part or component at no charge to the original customer, (ii) replace the defective part or component with a new or refurbished part of similar or better quality, at no charge to the original customer, or (iii) refund the original, documented purchase price of the Product (excluding tax) to the original customer upon return of the defective Product as directed by Tytus. After the applicable Warranty Period, the customer must pay for all parts, shipping and handling, labor, and replacement costs associated with the Product or any part or component thereof, regardless of any defects in the Product or any part or component thereof.
 - a. SHIPPING COSTS:** Notwithstanding the foregoing, the customer is responsible for any shipping or transportation charges incurred to ship or otherwise deliver the Product or part(s) to Tytus or a Tytus authorized service provider for diagnosis, repair or replacement during or after the Warranty Periods. The customer shall not return the Product or any part or component thereof to Tytus without Tytus's prior written consent. Tytus recommends that the customer insure the Product or any part or component for its full replacement cost when shipping.



b. TIMING AND PROCEDURE: Before Warranty service can commence, the original customer purchaser must contact Tytus for problem determination and service procedures. Proof of purchase in the form of a bill of sale or receipted invoice, evidencing that the Product is within the Warranty Period, **MUST** be presented to a Tytus authorized customer service provider in order to obtain the requested service. Please call the Toll Free Customer Service Line at (952) 807-9690 to obtain Warranty Service and Troubleshooting information. Please have your model and serial number available, along with your date of purchase of the Product. You can also visit us online at: www.tytusgrills.com. The customer shall not return the Product or any part or component thereof to Tytus without Tytus's prior written consent.

- 2. EXCLUSIONS AND LIMITATIONS TO WARRANTY SERVICE:** This Warranty covers manufacturing defects in materials and workmanship encountered in the normal, non-commercial use of the Product, and does not cover (a) damage or failure caused by or attributable to Product abuse or misuse, failure to follow instructions, improper installation or maintenance, alteration, accident, high cooking temperatures, outdoor humidity, outdoor temperature, chlorine, fertilizers, lawn pesticides, or chemical exposure; (b) improper or incorrectly performed repairs by non-authorized service facilities; (c) onsite customer instruction or adjustments, and any costs related to service calls to your home; (d) transportation, shipping, delivery, pickup, insurance, installation, or set-up costs; (e) costs of product removal, transportation, or reinstallation costs; (f) ordinary wear and tear, cosmetic damage, or damage due to acts of nature, including but not limited to, water, floods, wind, storm, tornado, earthquake, or fire, or due to damage caused by extraordinary impact events, such as dropping or crushing; (g) commercial use of the Product, or use of the Product for anything other than single-family household or residential use; (h) modification of the Product or any part of the Product; or (i) any food loss due to Product failure or difficulties in operating the Product.

This Warranty applies to the original customer only and does not cover Products sold AS IS or WITH ALL FAULTS. The Warranty is invalid if the factory-applied serial number has been altered or removed from the Product. This Warranty is valid only in the United States and Canada, and only applies to products purchased and serviced in the United States and Canada. All replaced parts and Products, and Products on which a refund is made, become the property of Tytus. The addition of equipment or features to the Product that are not manufactured or recommended by Tytus could affect the intended function of the Product, and therefore may void the Warranty. Furthermore, the exposure of the Product to chemicals, heat, cold, humidity, or other elements can affect the Product components, and therefore, the Warranty does not cover discoloration, fading, cosmetic changes, rust, or any damages or failure related to any such items. The Warranty is contingent upon the proper use, maintenance, and care of the Product. The Warranty may be void if the Product has been used in a manner contradictory to, or in violation of, the terms of the user's manual, warnings, or instructions accompanying the Product.

This Warranty is made in lieu of and supersedes all other warranties or conditions of merchantability or fitness for a particular purpose or general use, whether express, implied, collateral, statutory, or provided by common law, the Uniform Commercial Code, or otherwise. Tytus further disclaims all warranties after the end of the Warranty Period defined above. No other express warranty or guaranty given by any other person, firm, or entity with respect to the Product shall be binding on Tytus. Repair, replacement, or refund of the original purchase price, at Tytus's sole discretion, are the exclusive remedies of the customer. Tytus shall not be liable for any incidental or consequential damages caused by the use, misuse or inability to use the Product. These include but are not limited to any damages in the form of lost profits, loss of use, legal fees, economic loss, personal injuries, or any other damages caused by circumstances beyond the control of Tytus. Notwithstanding the foregoing, Tytus' aggregate liability to any customer shall not exceed the purchase price of the Product. This Warranty shall not extend to anyone other than the original customer who purchased the Product, and is not transferable. No person is authorized to alter, extend, or waive the Warranty of Tytus.

Some states do not allow the exclusion or limitation of incidental or consequential damages, or allow limitations on warranties, so the above limitations or exclusions may not apply to you. This Warranty gives you specific rights, and you may have other rights, which vary from state to state. The exclusions and limitations to the Warranty apply to the maximum extent permitted by law and unless restricted or prohibited by law. Where any term of this Warranty is prohibited by applicable law, it shall be null and void, but the remainder of this Warranty shall remain in effect.

PLEASE DIRECT ALL CORRESPONDENCE TO:

TYTUS Grills, LLC
support@tytusgrills.com | 855-969-5185 | www.tytusgrills.com

**PLEASE CONTACT CUSTOMER SERVICE TO CONFIRM PRODUCT
RETURN ADDRESS AND PROCEDURES FOR WARRANTY.**



TYTUS and TYTUS Grills are trademarks of TYTUS Grills, LLC.
© 2024 TYTUS Grills, LLC. Designed in the USA. Made in China.
Distributed by TYTUS Grills, LLC, Edina, MN.