



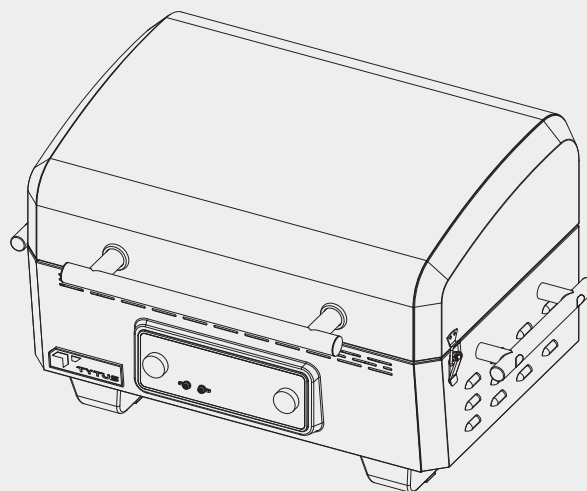
USER MANUAL

Electric Grill & Griddle

TYT-GHS-EGRD

CONTENTS

- 1 Safety Warnings
- 3 Package Contents
- 4 Assembling Your Electric Grill
- 6 Troubleshooting
- 7 Using your Electric Grill
- 10 Cleaning & Maintaining Your Grill
- 11 Parts Diagram
- 12 Parts List
- 12 Specifications
- 13 Warranty



SAFETY WARNINGS

IMPORTANT

NOTE: Keep this manual with your electric grill for future reference.

RECORD YOUR SERIAL #: _____

(See the silver ETL label on the bottom of the electric grill.)

⚠ WARNING: Failure to follow all manufacturer instructions could result in serious personal injury and/or property damage.

⚠ THIS GRILL IS FOR OUTDOOR USE ONLY.

⚠ CAUTION

- Read and follow all safety statements, assembly instructions, and use and care instructions before attempting to assemble and cook.
- Some parts may contain sharp edges! Wear protective gloves if necessary.
- Cooking grate handles are hot during use. Wait until the grill cools down before removing the cooking grate or use oven mitts to remove the cooking grate.
- **DO NOT** touch hot surfaces. Use handles or knobs.
- For residential use only. **DO NOT** use for commercial cooking.
- To protect against electrical shock do not immerse cord, plugs, or (state specific part or parts in question) in water or other liquid.
- Close supervision is necessary when any appliance is used by or near children.
- Unplug from outlet when not in use and before cleaning. Allow to cool before putting on or taking off parts.
- **DO NOT** operate any appliance with a damaged cord or plug or after the appliance malfunctions or has been damaged in any manner. Return appliance to the nearest authorized service facility for examination, repair, or adjustment.
- The use of accessory attachments not recommended by the appliance manufacturer may cause injuries.
- **DO NOT** use outdoors (this item may be omitted if the product is specifically intended for outdoor use).
- **DO NOT** let cord hang over edge of table or counter or touch hot surfaces.
- **DO NOT** place on or near a hot gas or electric burner, or in a heated oven.
- Extreme caution must be used when moving an appliance containing hot oil or other hot liquids.
- Always attach plug to appliance first, then plug cord into the wall outlet. To disconnect, turn any control to "off", then remove plug from wall outlet.
- **DO NOT** use appliance for other than intended use.

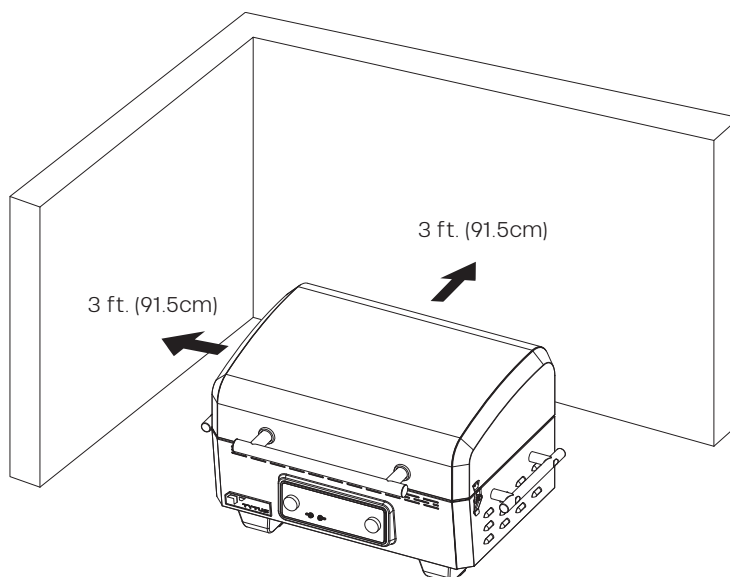


⚠ WARNING

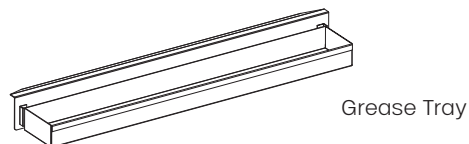
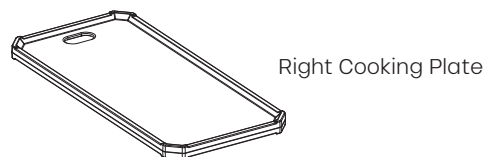
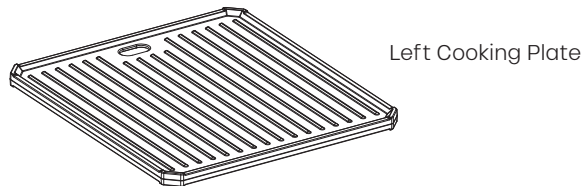
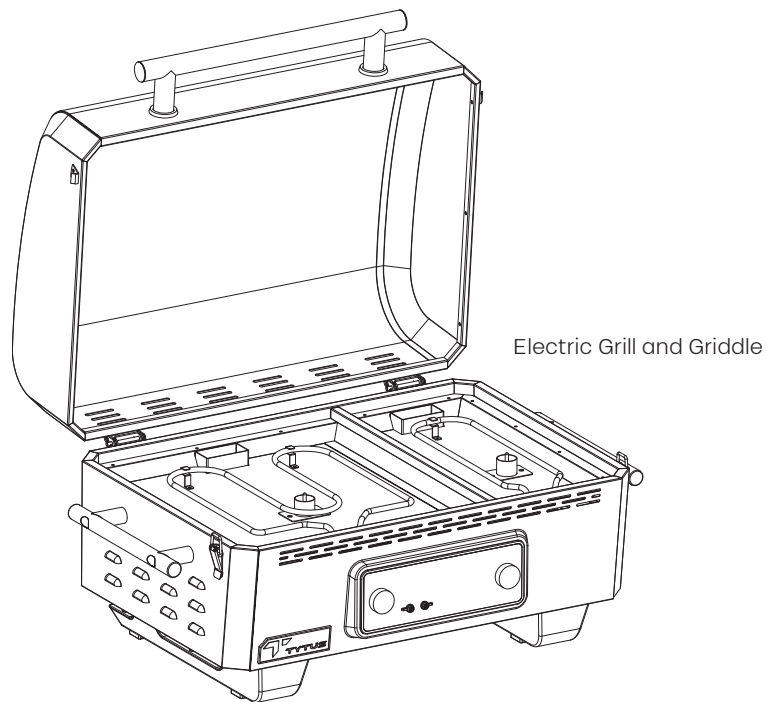
- Most surfaces on this unit are hot when in use. Use extreme caution. Keep others away from unit. Always wear protective clothing to prevent injury.
- Keep children and pets away.
- **DO NOT** move this unit during operation.
- **DO NOT** use this unit on or near combustible surfaces or structures such as wood decks, dry leaves or grass, vinyl or wood siding, etc.
- Children should be supervised to ensure that they do not play with the appliance.
- This appliance is not intended for use by persons (including children) with reduced physical, sensory or mental capabilities, or lack of experience and knowledge, unless they have been given supervision or instruction concerning use of the appliance by a person responsible for their safety.
- If the Supply cord is damaged, it must be replaced by the manufacturer, its service agent or similarly qualified persons in order to avoid a hazard.

WARNING

- **Use grill at least 3ft. from any wall or surface.** Maintain 10ft. clearance to objects that can catch on fire or sources of ignition such as pilot lights on water heaters, live electrical appliances, etc.
- Use grill only in well-ventilated spaces. **NEVER** use in enclosed spaces such as carport, garages, porches, covered patio, or under an overhead structure of any kind.
- Fuel, such as charcoal briquettes, are not to be used with appliance.
- Use only on properly grounded outlet.



PACKAGE CONTENTS



ASSEMBLING YOUR ELECTRIC GRILL

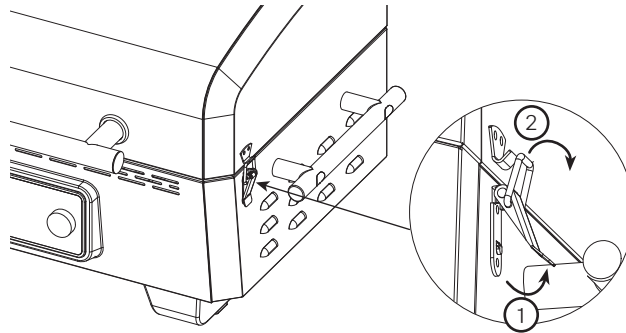


BEFORE ASSEMBLING YOUR GRILL

- Make sure that you have assistance from another person to handle the grill box and other large, heavy parts.
- Use the "Package Contents" on page 3 and "Parts Diagram" on page 11 to ensure all items are included and free of damage.
- Do not assemble or operate the grill if it appears damaged. If there are damaged or missing parts when you unpack the shipping box or you have questions during the assembly process, call **(855) 969-5185** or email **SUPPORT@TYTUSGRILLS.COM**

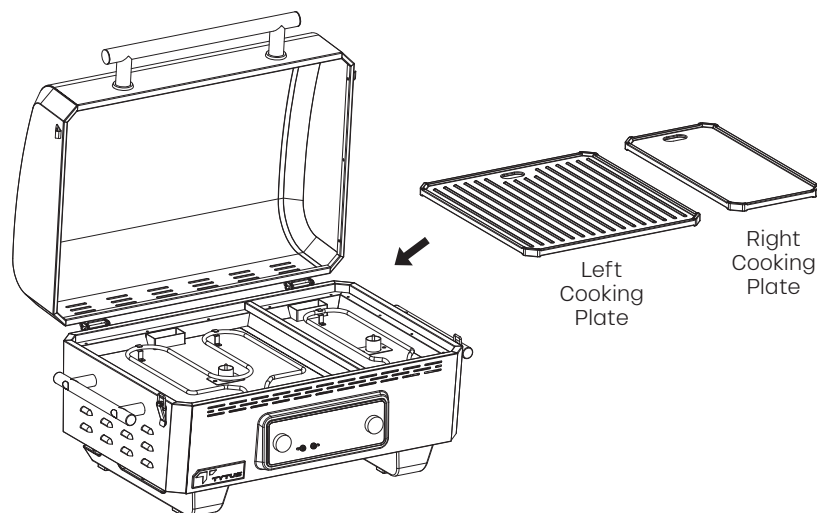
STEP 1

Unclip the side latches and open the lid.



STEP 2

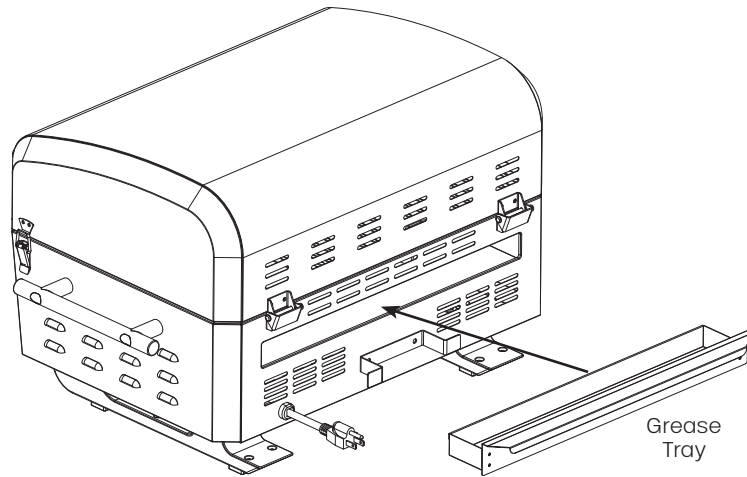
Place the cooking plates into the grill, lining the grease flow holes with the rear of the unit.



ASSEMBLING YOUR ELECTRIC GRILL

STEP 3

Install the grease tray on the back of the grill.



STEP 4

If you are using your Electric Grill & Griddle on its own, you can place it on a fire safe, level surface outdoors and start cooking



TROUBLESHOOTING ERROR CODES

| NO. | ERROR CODE | CAUSE | SOLUTION |
|-----|------------|--|--|
| 1 | Er1 | The left side RTD is not making the connection well or short circuit fault. | Check if the RTD wires are properly connected or replace a new RTD. |
| 2 | Er2 | Left side high temperature protection (the temperature is above 600°F). | Power off, it will automatically contact alarm after the temperature has decreased. |
| 3 | Er3 | The temperature does not exceed 150°F after 30 minutes of operation of left side. | Replace the RTD with a new RTD. |
| 4 | Er4 | The left side heating tube is not making the connection well. | Check if the heating tube wires are properly connected or replace with a new heating tube. |
| 5 | Er5 | The right side RTD is not making the connection well or short circuit fault. | Check if the RTD wires are properly connected or replace RTD with a new RTD. |
| 6 | Er6 | Right side high temperature protection (the temperature is above 500°F). | Power off, it will automatically contact alarm after the temperature has decreased. |
| 7 | Er7 | The temperature does not exceed 150°F after 30 minutes of operation of right side. | Replace the RTD with a new RTD. |
| 8 | Er8 | The right side heating tube is not making the connection well. | Check if the heating tube wires are properly connected or replace with a new heating tube. |

USING YOUR ELECTRIC GRILL

PREPARING TO USE YOUR GRILL

Before cooking with your grill, the following step should be closely followed to both cure the finish and season the interior steel. Failure to properly follow this step may damage the finish and/or impart metallic flavors to your food.

- Brush all interior surfaces – including grills and grates with vegetable cooking oil

POWER AND TEMPERATURE SETTING

1. Plug your grill into an outdoor rated outlet. The software version, 001, will show for 3 seconds on the display before turning off.



2. Press and hold the power button for 3 seconds to turn on the grill. It will display the current temperature of the left and right cooking plates.

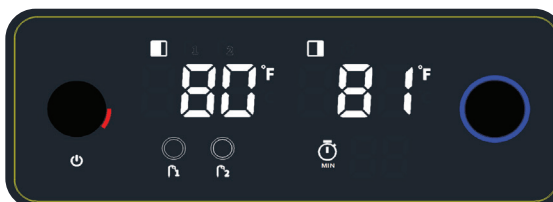




3. To change the setting for the left cooking grate, press the left control knob, ensure the left cooking grate icon is displayed, rotate to the desired temperature setting, and press again to confirm.



While the heating element heats the cooking plate, the ring around the knob will glow red and will rotate.



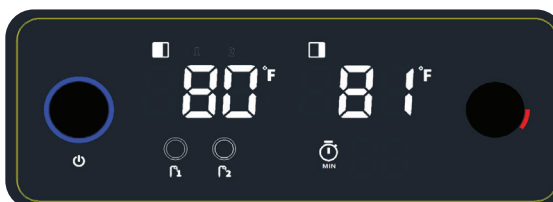
When the temperature is reached, the ring around the knob will be solid green.



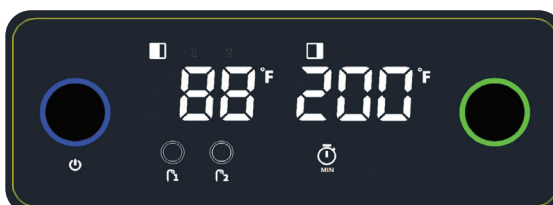
4. To change the setting for the right cooking grate, press the right control knob, ensure the right cooking grate icon is displayed, rotate to desired temperature setting, and press again to confirm.



While the heating element heats the cooking plate, the ring around the knob will glow red and will rotate.



When the temperature is reached, the ring around the knob will be solid green.



USING YOUR ELECTRIC GRILL

5. To turn off your Electric Grill & Griddle, press and hold the power button for 3 seconds. If the temperature of the grill is over 100 degrees F, the knob ring light will be red as a warning. If the temperature of the grill is lower than 100 degrees F, the knob ring light will be off.



USING YOUR TEMPERATURE PROBES

Using one or two of the temperature probes with your Electric Grill & Griddle will allow you to monitor the temperature of your food items as they cook.

1. Insert your temperature probes into the slots. The probe plugged into the left slot will be temperature probe 1, while the probe plugged into the right slot will be temperature probe 2.
2. To set a target temperature for temperature probe 1, press the left control knob, rotate the knob clockwise to select the icon for temperature probe 1, and press the knob to select. Rotate the knob to the desired temperature and press the knob once more to confirm.
3. To set a target temperature for temperature probe 2, press the left control knob, rotate the knob clockwise to select the icon for temperature probe 2, and press the knob to select. Rotate the knob to the desired temperature and press the knob once more to confirm.
4. When the internal temperature of your food reaches the set temperature, the unit will beep for 10 seconds, and the probe icon will flash for 10 seconds.



USING YOUR TIMER

Using your timer function will allow you to have the unit beep when a certain amount of time between 5 minutes and 60 minutes is reached.

1. To set a timer, press the right control knob, rotate the knob clockwise to select the clock icon, and press the knob to select. Rotate the knob to the desired time and press the knob once more to confirm. The timer can be set for between 5 and 60 minutes.
2. The time selected will be shown to the right of the clock icon.

3. When the timer is set and the time expires, the unit will beep for 10 seconds, and the probe icon will flash for 10 seconds.



CLEANING & MAINTAINING YOUR GRILL



CLEANING AND MAINTAINING YOUR ELECTRIC GRILL

EXTERIOR POWDER COATED SURFACES

Wipe your grill down after each use. Use warm soapy water to cut the grease. Do not use oven cleaner, abrasive cleansers or abrasive pads on powder coated surfaces.

COOKING GRATES

Wipe your cooking grates with a clean cloth and apply a thin coating of cooking oil. For stubborn food residue, use degreaser and a fiber metal bristle cleaning brush.

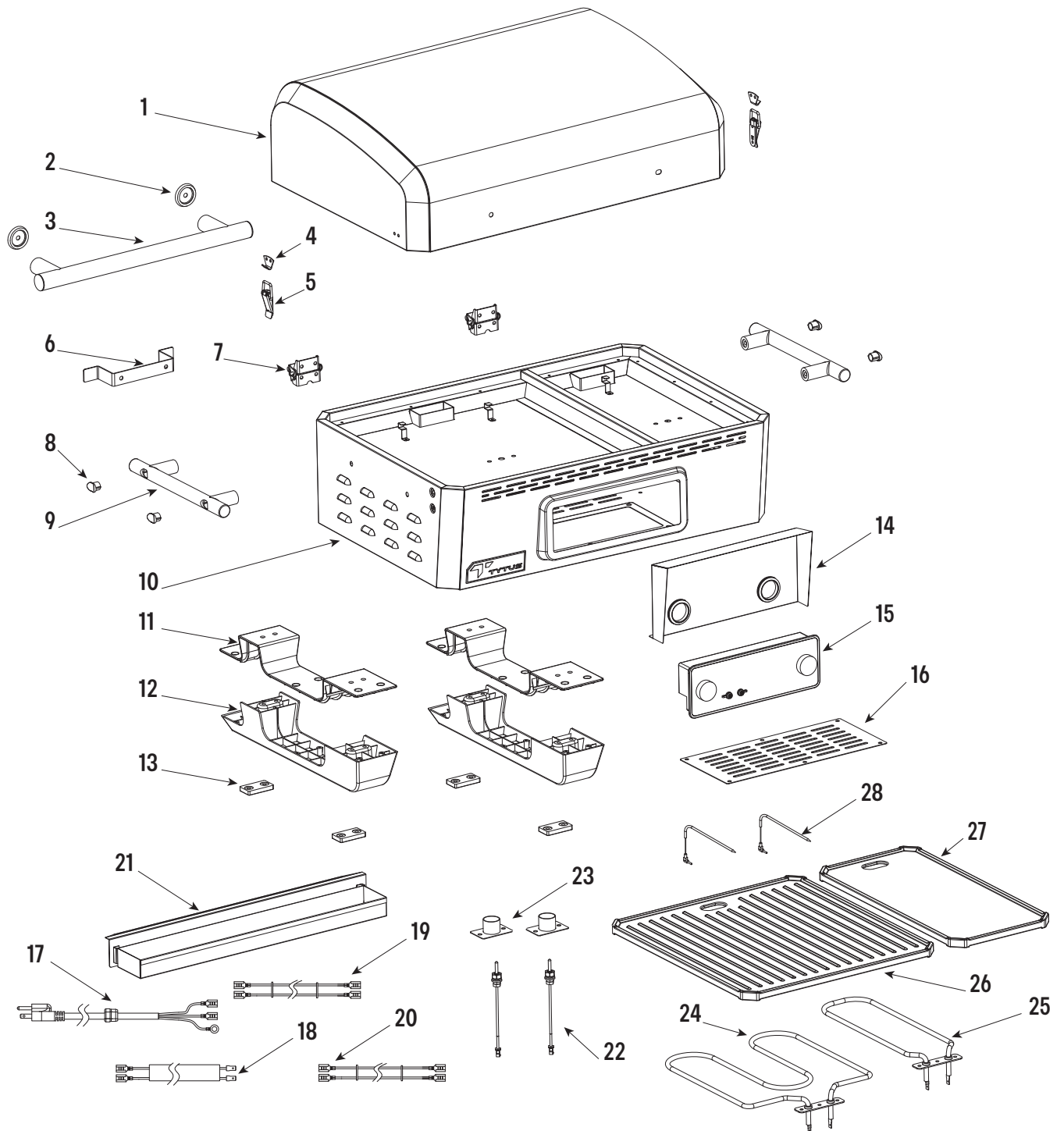
GREASE TRAY

To reduce the chance of a fire, the grease draining tray and heat shield should be inspected before each use. Remove grease (a plastic spatula works well) and wash the grease tray with a mild soap and warm water solution.

▲ WARNING: Grease can get very hot. Always handle the grease tray with a flame-retardant BBQ mitt. Before removing the tray, always be sure that the grill has properly cooled. Be aware that the tray does contain grease and be extremely careful when removing the tray to prevent spillage. Failure to follow these instructions could cause serious bodily injury or property damage.

PARTS DIAGRAM

PARTS DIAGRAM



PARTS LIST



PARTS LIST

| Part # | Description | QTY | TYTUS Part # |
|--------|---------------------------|-----|-----------------|
| 1 | Lid | 1 | DJ-70002-01 |
| 2 | Grill lid handle base | 2 | DJ-11606-DNA-08 |
| 3 | Grill lid handle | 1 | DJ-11606-DNA-09 |
| 4 | Lock catch | 2 | DJ-11606-DNA-06 |
| 5 | Lock | 2 | DJ-11606-DNA-07 |
| 6 | Power cord bracket | 1 | DJ-31601-DNA-10 |
| 7 | Lid hinge | 2 | DJ-11606-DNA-11 |
| 8 | Grill box side handle cap | 4 | DJ-11606-DNA-14 |
| 9 | Grill box side handle | 2 | DJ-11606-DNA-13 |
| 10 | Grill box | 1 | DJ-70002-10 |
| 11 | Leg upper plate | 2 | DJ-11606-DNA-15 |
| 12 | Leg lower plate | 2 | DJ-11606-DNA-16 |
| 13 | Leg base | 4 | DJ-11606-DNA-17 |
| 14 | Control board heat shield | 1 | DJ-70002-14 |
| 15 | Control board | 1 | DJ-70002-15 |

| Part # | Description | QTY | TYTUS Part # |
|--------|------------------------------------|-----|-----------------|
| 16 | Maintenance door | 1 | DJ-70002-16 |
| 17 | Power cord | 1 | DJ-70002-17 |
| 18 | Extension cords (power lines) | 1 | DJ-70002-18 |
| 19 | Heating tube line L (black+red) | 1 | DJ-70002-19 |
| 20 | Heating tube line R (black+yellow) | 1 | DJ-70002-20 |
| 21 | Grease cup | 1 | DJ-70002-21 |
| 22 | Thermocouple | 2 | DJ-70002-22 |
| 23 | Thermocouple cover | 2 | DJ-70002-23 |
| 24 | Heating tube L | 1 | DJ-70002-24 |
| 25 | Heating tube R | 1 | DJ-70002-25 |
| 26 | Cooking plate L | 1 | DJ-70002-26 |
| 27 | Cooking plate R | 1 | DJ-70002-27 |
| 28 | Temperature probe | 2 | DJ-31601-DNA-02 |

SPECIFICATIONS

DIMENSIONS

| | |
|-------------------------------|-------------------------------|
| Assembled Width | 26.7 inches |
| Assembled Depth | 20.1 inches |
| Assembled Height (Lid Closed) | 15.7 inches |
| Total Cooking Area (W & D) | 318 sq. inches (21.2" by 15") |

MATERIALS

| | |
|----------------|---------------|
| Grate Material | Cast aluminum |
| Finish | Gunmetal Gray |

SPECS

| | |
|----------------------|-----------------------|
| No. Heating Elements | 2 |
| Heat Control | LCD screen with knobs |
| Wattage | R: 1200w, L: 500w |
| Max Temp | 500 |
| Ignition Type | Electric |
| Warranty | 5 year limited |

WARRANTY

TYTUS GRILLS LIMITED WARRANTY TO ORIGINAL CUSTOMER

(the "Products" or "Product" when referencing a singular product herein).

Tytus Grills, LLC ("Tytus") warrants the Products identified above to be free from defects in material and workmanship, for the relevant and specified Warranty Periods set forth below for specific parts or components of the Products, under proper use, maintenance, and care according to the owner's manual, warnings, and instructions accompanying the Products:

WARRANTY PERIODS:

| PARTS OR COMPONENTS COVERED: | TIME PERIOD COVERED: |
|---|---|
| Porcelain-enameled Cast Iron Cooking Grates | 3 years from the date of the original customer purchase* |
| Powder-coated and Porcelain-coated parts of the Product | 1 year from the date of the original customer purchase* |
| All other parts of the Products not specified above (excluding spare parts discussed below) | 1 year from the date of the original customer purchase* |
| Any spare parts provided by Tytus for use in any of the Products, and any replacement parts used in a repair performed by an authorized Tytus dealer. | 90 days from the date the spare or replacement part is first shipped to the customer, or the date the part is incorporated into the Product by an authorized Tytus dealer, whichever comes first. * |

WARRANTY PERIODS EFFECTIVE IF AND ONLY IF PRODUCT IS REGISTERED BY ORIGINAL CUSTOMER WITHIN 90 DAYS OF PURCHASE:

| PARTS OR COMPONENTS COVERED: | TIME PERIOD COVERED: |
|---|---|
| Porcelain-enameled Cast Iron Cooking Grates | 5 years from the date of the original customer purchase* |
| Powder-coated and Porcelain-coated parts of the Product | 2 years from the date of the original customer purchase* |
| All other parts of the Products not specified above (excluding spare parts discussed below) | 2 years from the date of the original customer purchase* |
| Any spare parts provided by Tytus for use in any of the Products, and any replacement parts used in a repair performed by an authorized Tytus dealer. | 90 days from the date the spare or replacement part is first shipped to the customer, or the date the part is incorporated into the Product by an authorized Tytus dealer, whichever comes first. * |

*** PLEASE NOTE** – Proof of purchase evidencing the date of the original customer purchase, or the date of the spare part shipment or incorporation into the Product if applicable, is **required** for all warranty service. The express warranty set forth herein (the "Warranty") is subject to all terms set forth herein below.

1. WARRANTY SERVICE (PARTS, LABOR AND/OR REPLACEMENT): During the Warranty Periods set forth above, if the parts or components covered by each respective Warranty Period are determined by Tytus or a Tytus authorized customer service provider to be defective in material or workmanship, Tytus will, at its sole discretion and option: (i) repair the defective part or component at no charge to the original customer, (ii) replace the defective part or component with a new or refurbished part of similar or better quality, at no charge to the original customer, or (iii) refund the original, documented purchase price of the Product (excluding tax) to the original customer upon return of the defective Product as directed by Tytus. After the applicable Warranty Period, the customer must pay for all parts, shipping and handling, labor, and replacement costs associated with the Product or any part or component thereof, regardless of any defects in the Product or any part or component thereof.

a. SHIPPING COSTS: Notwithstanding the foregoing, the customer is responsible for any shipping or transportation charges incurred to ship or otherwise deliver the Product or part(s) to Tytus or a Tytus authorized service provider for diagnosis, repair or replacement during or after the Warranty Periods. The customer shall not return the Product or any part or component thereof to Tytus without Tytus's prior written consent. Tytus recommends that the customer insure the Product or any part or component for its full replacement cost when shipping.



b. TIMING AND PROCEDURE: Before Warranty service can commence, the original customer purchaser must contact Tytus for problem determination and service procedures. Proof of purchase in the form of a bill of sale or receipted invoice, evidencing that the Product is within the Warranty Period, MUST be presented to a Tytus authorized customer service provider in order to obtain the requested service. Please call the Toll Free Customer Service Line at (952) 807-9690 to obtain Warranty Service and Troubleshooting information. Please have your model and serial number available, along with your date of purchase of the Product. You can also visit us online at: www.tytusgrills.com. The customer shall not return the Product or any part or component thereof to Tytus without Tytus's prior written consent.

- 2. EXCLUSIONS AND LIMITATIONS TO WARRANTY SERVICE:** This Warranty covers manufacturing defects in materials and workmanship encountered in the normal, non-commercial use of the Product, and does not cover (a) damage or failure caused by or attributable to Product abuse or misuse, failure to follow instructions, improper installation or maintenance, alteration, accident, high cooking temperatures, outdoor humidity, outdoor temperature, chlorine, fertilizers, lawn pesticides, or chemical exposure; (b) improper or incorrectly performed repairs by non-authorized service facilities; (c) onsite customer instruction or adjustments, and any costs related to service calls to your home; (d) transportation, shipping, delivery, pickup, insurance, installation, or set-up costs; (e) costs of product removal, transportation, or reinstallation costs; (f) ordinary wear and tear, cosmetic damage, or damage due to acts of nature, including but not limited to, water, floods, wind, storm, tornado, earthquake, or fire, or due to damage caused by extraordinary impact events, such as dropping or crushing; (g) commercial use of the Product, or use of the Product for anything other than single-family household or residential use; (h) modification of the Product or any part of the Product; or (i) any food loss due to Product failure or difficulties in operating the Product.

This Warranty applies to the original customer only and does not cover Products sold AS IS or WITH ALL FAULTS. The Warranty is invalid if the factory-applied serial number has been altered or removed from the Product. This Warranty is valid only in the United States and Canada, and only applies to products purchased and serviced in the United States and Canada. All replaced parts and Products, and Products on which a refund is made, become the property of Tytus. The addition of equipment or features to the Product that are not manufactured or recommended by Tytus could affect the intended function of the Product, and therefore may void the Warranty. Furthermore, the exposure of the Product to chemicals, heat, cold, humidity, or other elements can affect the Product components, and therefore, the Warranty does not cover discoloration, fading, cosmetic changes, rust, or any damages or failure related to any such items. The Warranty is contingent upon the proper use, maintenance, and care of the Product. The Warranty may be void if the Product has been used in a manner contradictory to, or in violation of, the terms of the user's manual, warnings, or instructions accompanying the Product.

This Warranty is made in lieu of and supersedes all other warranties or conditions of merchantability or fitness for a particular purpose or general use, whether express, implied, collateral, statutory, or provided by common law, the Uniform Commercial Code, or otherwise. Tytus further disclaims all warranties after the end of the Warranty Period defined above. No other express warranty or guaranty given by any other person, firm, or entity with respect to the Product shall be binding on Tytus. Repair, replacement, or refund of the original purchase price, at Tytus's sole discretion, are the exclusive remedies of the customer. Tytus shall not be liable for any incidental or consequential damages caused by the use, misuse or inability to use the Product. These include but are not limited to any damages in the form of lost profits, loss of use, legal fees, economic loss, personal injuries, or any other damages caused by circumstances beyond the control of Tytus. Notwithstanding the foregoing, Tytus' aggregate liability to any customer shall not exceed the purchase price of the Product. This Warranty shall not extend to anyone other than the original customer who purchased the Product, and is not transferable. No person is authorized to alter, extend, or waive the Warranty of Tytus.

Some states do not allow the exclusion or limitation of incidental or consequential damages, or allow limitations on warranties, so the above limitations or exclusions may not apply to you. This Warranty gives you specific rights, and you may have other rights, which vary from state to state. The exclusions and limitations to the Warranty apply to the maximum extent permitted by law and unless restricted or prohibited by law. Where any term of this Warranty is prohibited by applicable law, it shall be null and void, but the remainder of this Warranty shall remain in effect.

PLEASE DIRECT ALL CORRESPONDENCE TO:

TYTUS Grills, LLC
support@tytusgrills.com | 855-969-5185 | www.tytusgrills.com

**PLEASE CONTACT CUSTOMER SERVICE TO CONFIRM PRODUCT
RETURN ADDRESS AND PROCEDURES FOR WARRANTY.**



TYTUS and TYTUS Grills are trademarks of TYTUS Grills, LLC.
© 2025 TYTUS Grills, LLC. Designed in the USA. Made in China.
Distributed by TYTUS Grills, LLC, 7151 Metro Blvd, Edina, MN 55439